

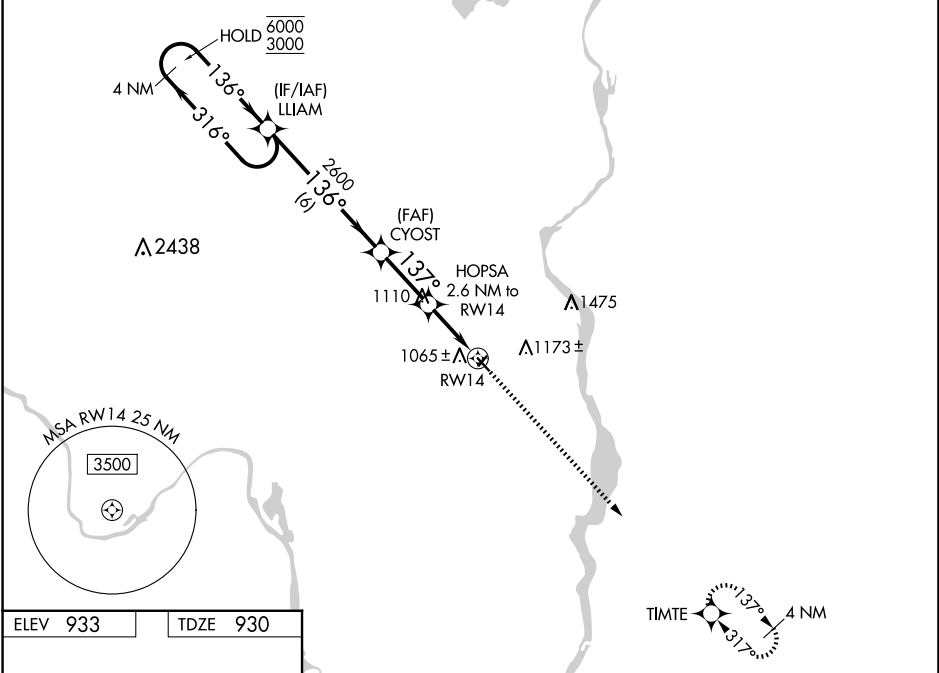
WAAS CH 56345 W14A	APP CRS 137°	Rwy Idg TDZE Apt Elev	3504 930 933
--	------------------------	-----------------------------	---

RNAV (GPS) RWY 14

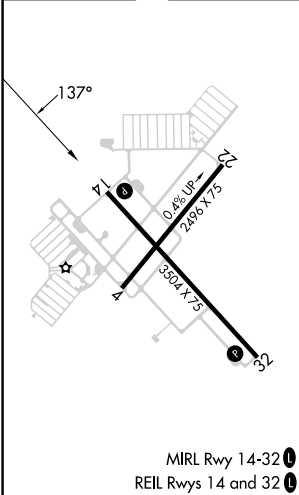
LAKE ELMO (21D)

RNP APCH - GPS.	MISSED APPROACH: Climb 3000 direct TIMTE and hold.
<p>▼ Rwy 14 helicopter visibility reduction below 3/4 SM NA. For uncompensated Baro-VNAV systems, LNAV/VNAV NA below -16°C or above 54°C. Circling Rwy 4, 22 NA at night.</p>	

AWOS-3 120.075	MINNEAPOLIS APP CON 121.2 335.65	CLNC DEL 118.625	UNICOM 123.075 (CTAF) 0
--------------------------	--	----------------------------	-----------------------------------



ELEV 933	TDZE 930
----------	----------



VGSi and RNAV glidepath not coincident (VGSi Angle 3.50/TCH 25).				3000	TIMTE
4 NM Holding Pattern				↑	✦
6000	← 316°	→ 136°	136°	2600	137°
3000				1800	
GP 3.00°					
TCH 40					
	6 NM	2.5 NM	1.5 NM	1.1 NM	
CATEGORY	A	B	C	D	
LPV DA	1180-1	250 (300-1)			NA
LNAV/VNAV DA	1257-1	327 (400-1)			NA
LNAV MDA	1360-1	430 (500-1)			NA
CIRCLING	1440-1 507 (600-1)	1500-1 567 (600-1)			NA