

RNAV 1 - DME/DME/IRU or GPS.

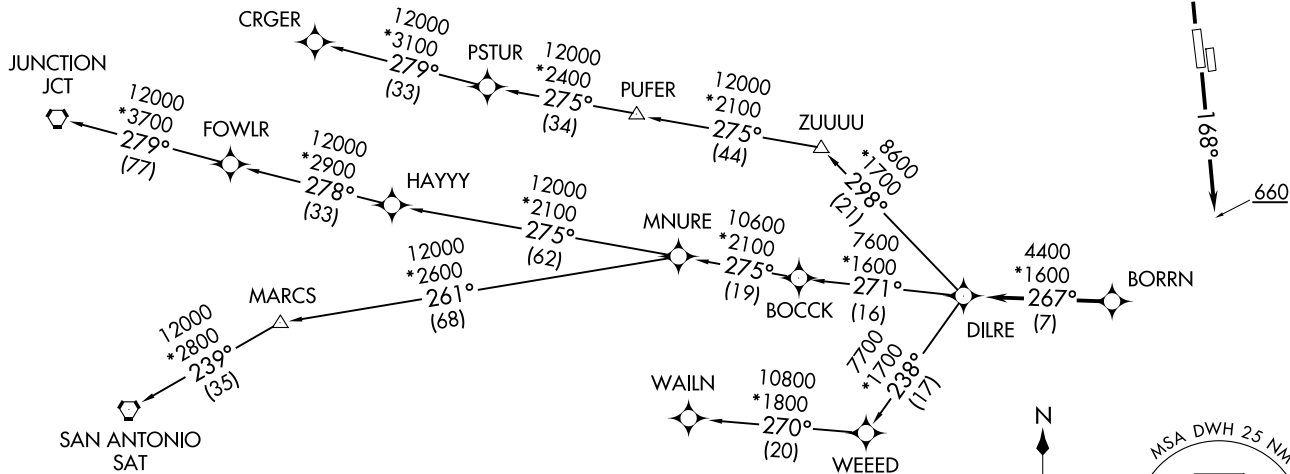
RADAR required.

**TOP ALTITUDE:  
ASSIGNED BY ATC**

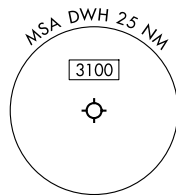
ATIS  
128.375  
CLNIC DEL  
119.45  
GND CON  
121.8 239.0  
HOOKS TOWER \*  
127.4 354.1 (EAST)  
118.4 (CTAF) 354.1 (WEST)  
HOUSTON DEP CON  
123.8 257.7 (Rwys 17L/R)  
119.7 281.4 (Rwys 35L/R)

**TAKEOFF MINIMUMS**

Rwys 17L, 35R: NA - Environmental.  
Waterways 17, 35: NA - Air Traffic.  
Rwys 17R, 35L: Standard with minimum  
climb of 500'/NM to 660.



NOTE: CRGER-TRANSITION ATC assigned only for aircraft departing 54T, AXH, EFD, GLS, HPY, IWS, LBX, LVJ, SGR, TME, TØØ, T41.



NOTE: Chart not to scale.

(CONTINUED ON FOLLOWING PAGE)

BORRN SIX DEPARTURE (RNAV)  
(BORRN6.BORRN) 30NOV23

DAVID WAYNE HOOKS MEML (DWH)  
HOUSTON, TEXAS

(BORRN6.BORRN) 25051  
BORRN SIX DEPARTURE (RNAV)

AL-5457 (FAA)  
DAVID WAYNE HOOKS MEML (DWH)  
HOUSTON, TEXAS

# BORRN SIX DEPARTURE (RNAV)



## DEPARTURE ROUTE DESCRIPTION

TAKEOFF RUNWAY 17R: Climb on heading 168° to 660, for RADAR vectors to BORRN, thence. . . .

TAKEOFF RUNWAY 35L: Climb on heading 348° to 660, for RADAR vectors to BORRN, thence. . . .

. . . .on track 267° to DILRE, then on (transition). Maintain ATC assigned altitude. Expect filed altitude 10 minutes after departure.

CRGER TRANSITION (BORRN6.CRGER)

JUNCTION TRANSITION (BORRN6.JCT)

MNURE TRANSITION (BORRN6.MNURE)

SAN ANTONIO TRANSITION (BORRN6.SAT)

WAILN TRANSITION (BORRN6.WAILN)

SC-5, 20 FEB 2025 to 20 MAR 2025

SC-5, 20 FEB 2025 to 20 MAR 2025