

# CRIED ONE DEPARTURE

AL-5457 (FAA)

DAVID WAYNE HOOKS MEML (DWH)  
HOUSTON, TEXAS

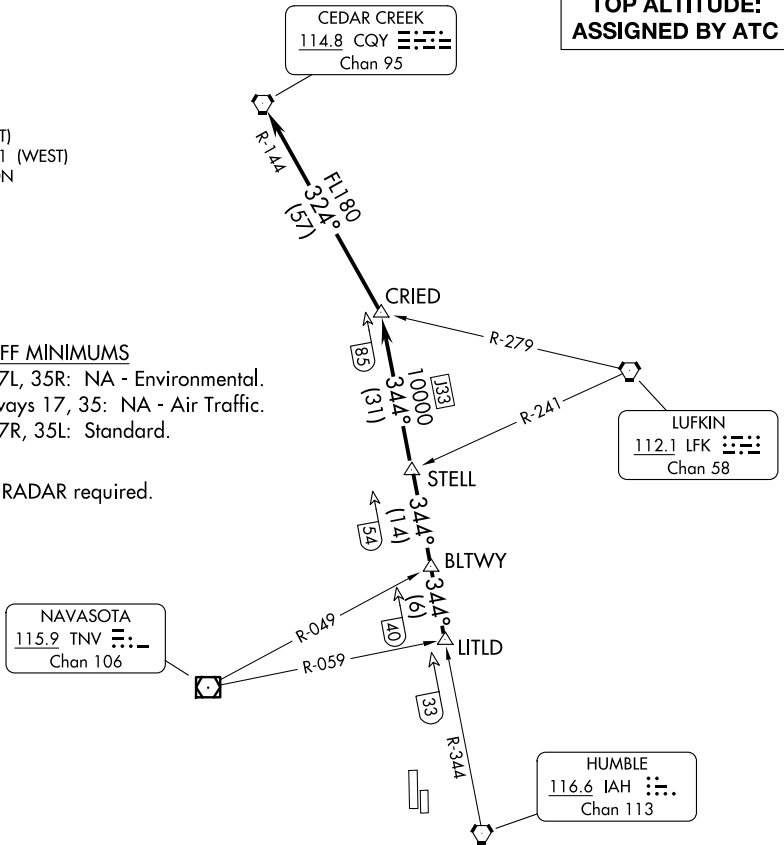
ATIS  
128.375  
CLNC DEL  
119.45  
GND CON  
121.8 239.0  
HOOKS TOWER ★  
127.4 354.1 (EAST)  
118.4 (CTAF) 354.1 (WEST)  
HOUSTON DEP CON  
119.7 281.4

**TOP ALTITUDE:  
ASSIGNED BY ATC**

### TAKEOFF MINIMUMS

Rwys 17L, 35R: NA - Environmental.  
Waterways 17, 35: NA - Air Traffic.  
Rwys 17R, 35L: Standard.

NOTE: RADAR required.



NOTE: Chart not to scale.

### DEPARTURE ROUTE DESCRIPTION

**TAKEOFF ALL RUNWAYS:** When entering controlled airspace, climb on assigned heading for RADAR vectors to LITLD INT. Maintain ATC assigned altitude. Expect filed altitude 10 minutes after departure, thence . . . .

. . . . on IAH R-344 to STELL INT, then on IAH R-344 to CRIED INT, then left turn on CQY R-144 to CQY VORTAC.

# CRIED ONE DEPARTURE