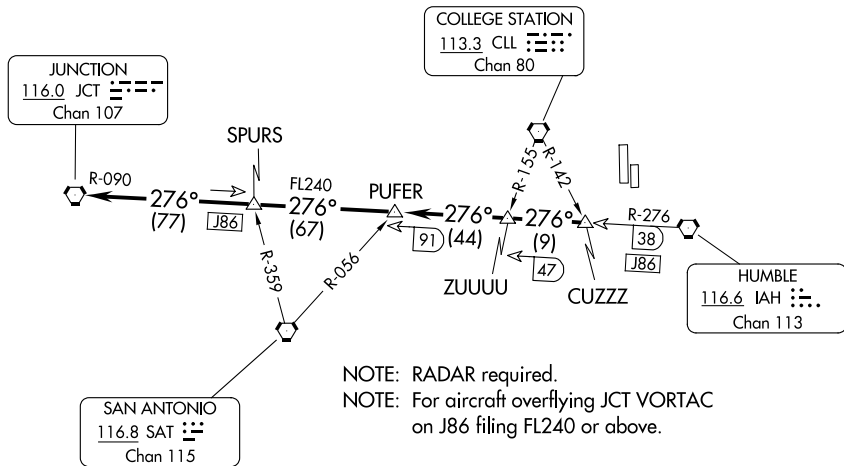


# JUNCTION ONE DEPARTURE

ATIS  
 128.375  
 CLNC DEL  
 119.45  
 HOUSTON DEP CON  
 123.8 257.7 (Rwys 17L/R)  
 119.7 281.4 (Rwys 35L/R)  
 GND CON  
 121.8 239.0  
 HOOKS TOWER ★  
 127.4 354.1 (EAST)  
 118.4 (CTAF) 354.1 (WEST)

**TOP ALTITUDE:**  
**ASSIGNED BY ATC**



NOTE: RADAR required.  
 NOTE: For aircraft overflying JCT VORTAC on J86 filing FL240 or above.

**TAKEOFF MINIMUMS**  
 Rwys 17R, 35L: Standard.  
 Rwys 17L, 35R: NA - Environmental.  
 Waterway 17, 35: NA - Air Traffic.

NOTE: Chart not to scale.

## DEPARTURE ROUTE DESCRIPTION

**TAKEOFF ALL RUNWAYS:** When entering controlled airspace, climb on assigned heading for RADAR vectors to CUZZZ INT. Maintain ATC assigned altitude. Expect filed altitude 10 minutes after departure, thence. . . .

. . . .on IAH R-276 and JCT R-090 to JCT VORTAC.

# JUNCTION ONE DEPARTURE

SC-5, 20 FEB 2025 to 20 MAR 2025

SC-5, 20 FEB 2025 to 20 MAR 2025