

LOC/DME I-HEW <b>110.5</b> Chan <b>42</b>	APP CRS <b>168°</b>	Rwy Idg TDZE Apt Elev	<b>6002</b> <b>152</b> <b>152</b>
---	------------------------	-----------------------------	---

# LOC RWY 17R

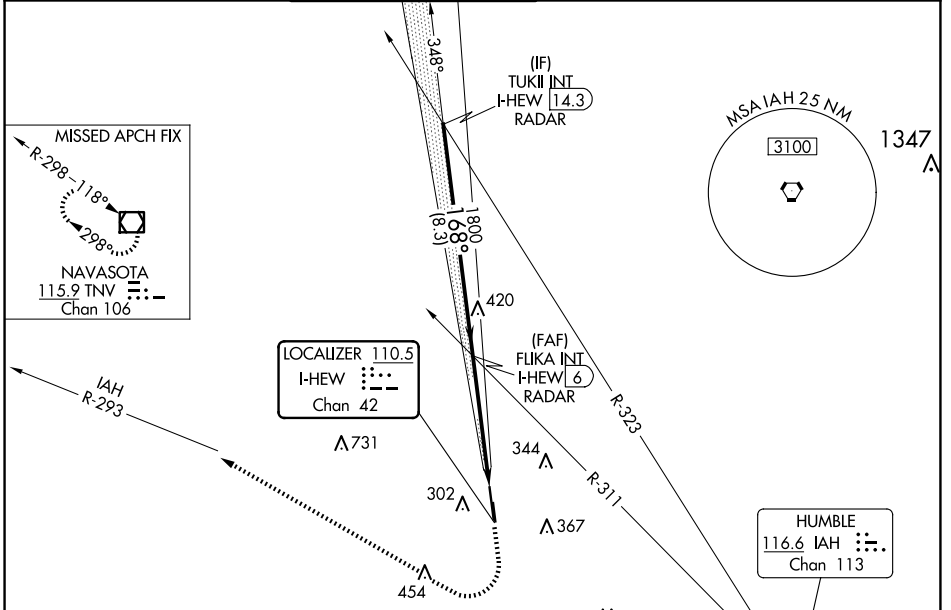
DAVID WAYNE HOOKS MEML (DWH)

RADAR required for procedure entry.

When local altimeter setting not received, use George Bush Intcnl/Houston altimeter setting and increase all MDA 40 feet; increase S-LOC 17R Cts C/D visibility 1/8 mile. Circling NA to Rwy 17W and 35W. Rwy 17R helicopter visibility reduction below 3/4 SM NA. Circling Rwy 35R NA at night.

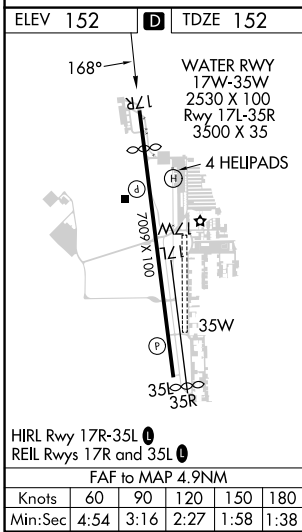
MISSED APPROACH: Climb to 1200 then climbing right turn to 2000 on heading 325° and IAH VORTAC R-293 to TNV VOR/DME and hold.

ATIS <b>128.375</b>	HOUSTON APP CON <b>119.7 281.4</b>	HOOKS TOWER* <b>127.4 354.1 EAST</b> <b>118.4 (CTAF) 354.1 WEST</b>	GND CON <b>121.8 239.0</b>	CLNC DEL <b>119.45</b>	UNICOM <b>122.95</b>
------------------------	---------------------------------------	---	-------------------------------	---------------------------	-------------------------



SC-5, 20 FEB 2025 to 20 MAR 2025

SC-5, 20 FEB 2025 to 20 MAR 2025



Visual Segment - Obstacles.		1200	2000	IAH R-293	TNV
		↑	hdg 325°	☐	☐
TUKII INT I-HEW (14.3) RADAR		2000	168°	FLIKA INT I-HEW (6) RADAR	I-HEW (1.1)
		8.3 NM		4.9 NM	
CATEGORY	A	B	C	D	
S-LOC 17R	640-1	488 (500-1)	640-1 3/8	488 (500-1 3/8)	
<b>C</b> CIRCLING	640-1	660-1	680-1 1/2	780-2	
	488 (500-1)	508 (600-1)	528 (600-1 1/2)	628 (700-2)	