

WAAS CH 41063 W17A	APP CRS 168°	Rwy Idg TDZE 152 Apt Elev 152	6002
--	------------------------	---	-------------

RNAV (GPS) RWY 17R

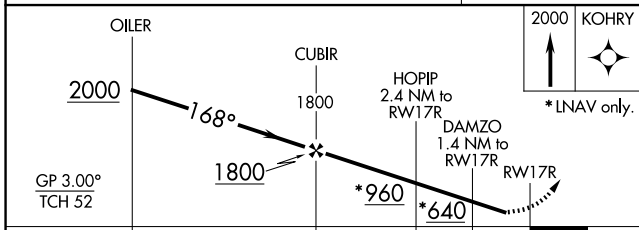
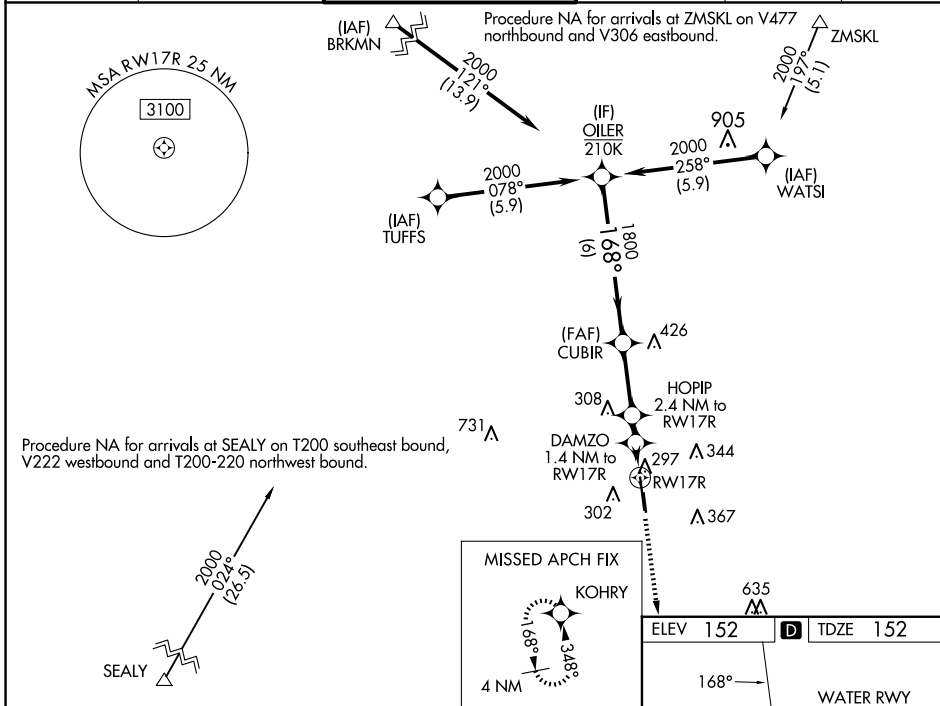
DAVID WAYNE HOOKS MEML (DWH)

RNP APCH-GPS.

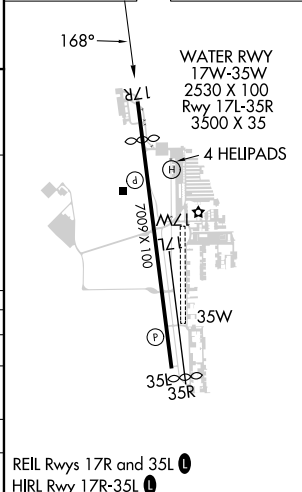
Baro-VNAV NA when using George Bush Intcnl/Houston altimeter setting. For uncompensated Baro-VNAV systems, procedure NA below -2°C or above 54°C. Rwy 17R helicopter visibility reduction below 3/4 SM NA. When local altimeter setting not received, use George Bush Intcnl/Houston altimeter setting: Increase all DAs 36 feet and visibilities 1/8 SM; increase all MDAs 40 feet. When control tower closed, LPV visibility 1 SM.

MISSED APPROACH:
Climb to 2000 direct
KOHRY and hold.

ATIS 128.375	HOUSTON APP CON 119.7 281.4	HOOKS TOWER* 127.4 354.1 EAST 118.4 (CTAF) 0 354.1 WEST	GND CON 121.8 239.0	CLNC DEL 119.45	UNICOM 122.95
------------------------	---------------------------------------	---	-------------------------------	---------------------------	-------------------------



ELEV 152	TDZE 152
----------	----------



CATEGORY	A	B	C	D
LPV DA		402-3/4	250 (300-3/4)	
LNAV/VNAV DA		508-1 1/8	356 (400-1 1/8)	
LNAV MDA	600-1	448 (500-1)	600-1 3/8	448 (500-1 3/8)
CIRCLING	640-1 488 (500-1)	660-1 508 (600-1)	680-1 1/2 528 (600-1 1/2)	780-2 628 (700-2)

SC-5, 20 FEB 2025 to 20 MAR 2025

SC-5, 20 FEB 2025 to 20 MAR 2025