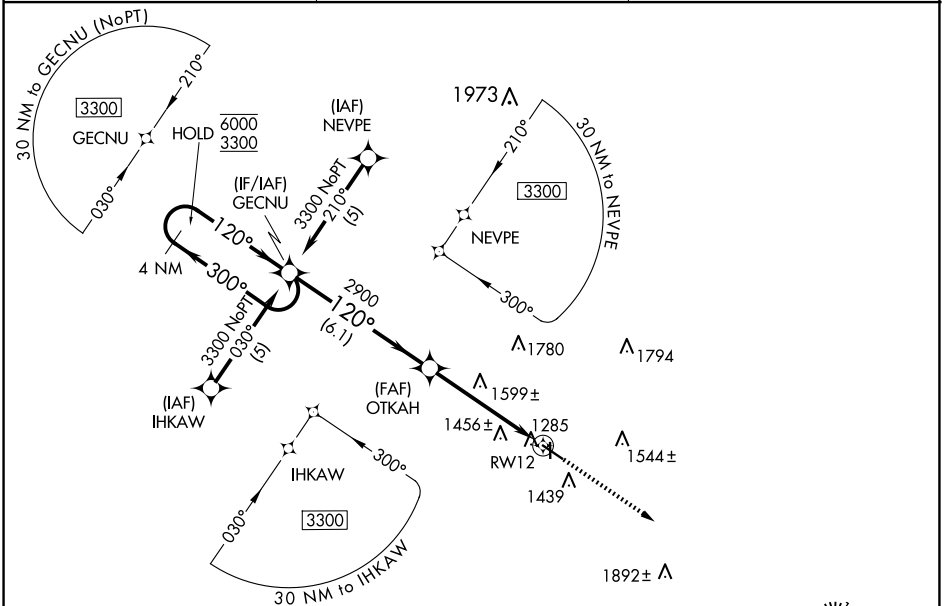


WAAS CH <b>90409</b> <b>W12A</b>	APP CRS <b>120°</b>	Rwy Idg TDZE Apt Elev	<b>5000</b> <b>1274</b> <b>1274</b>
--	------------------------	-----------------------------	---

# RNAV (GPS) RWY 12

DENISON MUNI (DNS)

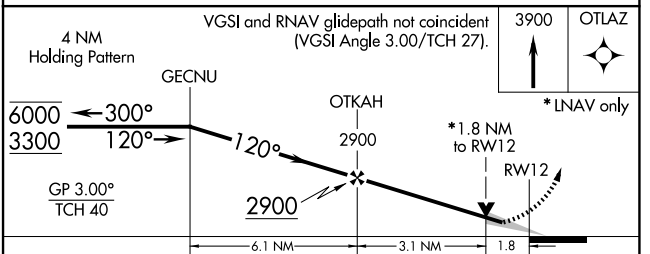
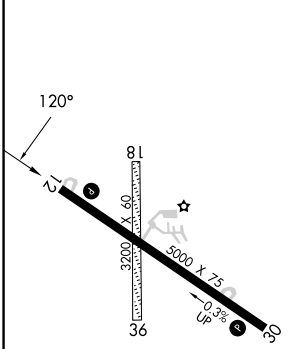
RNP APCH-GPS.		<p><b>MISSED APPROACH:</b> Climb to 3900 direct OTLAZ and hold.</p>
<p><b>⚠</b> Circling NA to Rwys 18 and 36. For uncompensated Baro-VNAV systems, LNAV/VNAV NA below -17°C or above 54°C. Baro-VNAV and VDP NA when using Carroll altimeter setting. <b>⚠</b> When local altimeter setting not received, use Carroll altimeter setting; increase LPV DA 1596 feet, LNAV/VNAV DA to 1626 feet; increase all MDAs 80 feet and visibility LNAV Cat C ½ SM and Circling Cat C ¼ SM.</p>		
AWOS-3 <b>119.95</b>	MINNEAPOLIS CENTER <b>119.6 290.4</b>	UNICOM <b>122.8 (CTAF) 0</b>



NC-3, 20 FEB 2025 to 20 MAR 2025

NC-3, 20 FEB 2025 to 20 MAR 2025

ELEV 1274	TDZE 1274
-----------	-----------



CATEGORY	A	B	C	D
LPV DA		1524-1 250 (300-1)		NA
LNAV/VNAV DA		1554-1 280 (300-1)		NA
LNAV MDA	1860-1	586 (600-1)	1860-1¾ 586 (600-1¾)	NA
CIRCLING	1860-1 586 (600-1)	1880-1 606 (700-1)	2100-2½ 826 (900-2½)	NA

DENISON, IOWA  
MIRL Rwy 12-30 0  
REIL Rwy 12 and 30 0

41°59'N-95°23'W

DENISON MUNI (DNS)  
**RNAV (GPS) RWY 12**