

WAAS CH 45908 W30A	APP CRS 300°	Rwy Idg TDZE Apt Elev	5000 1266 1274
---------------------------------	------------------------	-----------------------------	---

RNAV (GPS) RWY 30

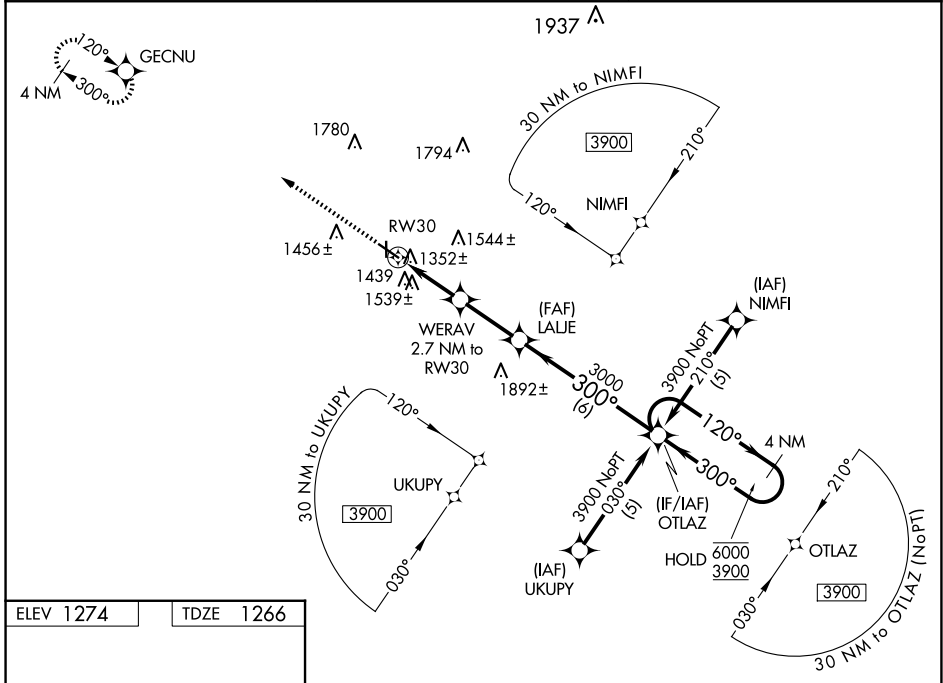
DENISON MUNI (DNS)

RNP APCH-GPS.

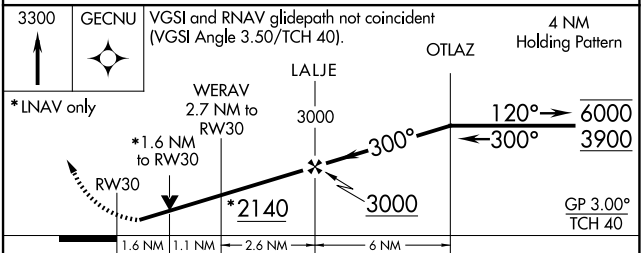
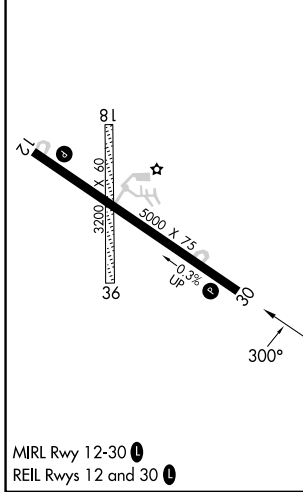
⚠ Circling NA to Rwys 18 and 36. Rwy 30 helicopter visibility reduction below $\frac{3}{4}$ SM NA. Baro-VNAV and VDP NA when using Carroll altimeter setting. When local altimeter setting not received, use Carroll altimeter setting; increase LPV DA to 1623 feet, increase LNAV/VNAV DA to 1925 feet and all visibilities $\frac{1}{8}$ SM, increase all MDA 80 feet; increase LNAV and Circling visibility Cat C $\frac{1}{4}$ SM. For uncompensated Baro-VNAV systems, LNAV/VNAV NA below -17°C or above 54°C.

MISSED APPROACH: Climb to 3300 direct GECNU and hold.

AWOS-3 119.95	MINNEAPOLIS CENTER 119.6 290.4	UNICOM 122.8 (CTAF)
-------------------------	--	-------------------------------



ELEV 1274	TDZE 1266
-----------	-----------



CATEGORY	A	B	C	D
LPV DA	1551-1	285 (300-1)		NA
LNAV/VNAV DA	1853-1 $\frac{3}{4}$	587 (600-1 $\frac{3}{4}$)		NA
LNAV MDA	1800-1	534 (600-1)	1800-1 $\frac{1}{2}$ 534 (600-1 $\frac{1}{2}$)	NA
CIRCLING	1840-1 566 (600-1)	1880-1 606 (700-1)	2100-2 $\frac{1}{2}$ 826 (900-2 $\frac{1}{2}$)	NA

NC-3, 20 FEB 2025 to 20 MAR 2025

NC-3, 20 FEB 2025 to 20 MAR 2025