

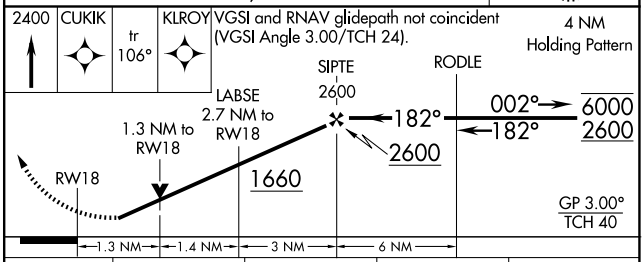
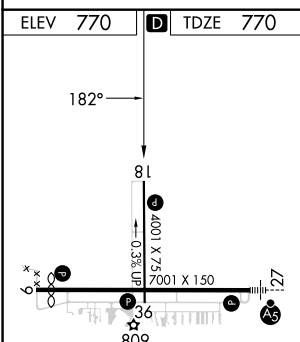
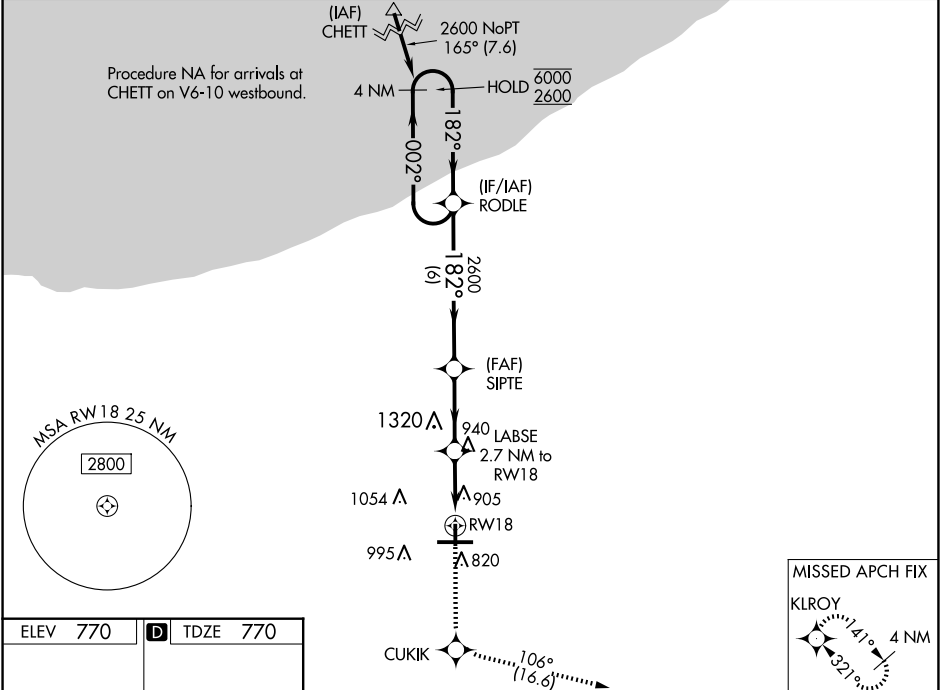
WAAS CH <b>82406</b> W18A	APP CRS <b>182°</b>	Rwy Idg TDZE Apt Elev	<b>4001</b> <b>770</b> <b>770</b>
---------------------------------	------------------------	-----------------------------	---

# RNAV (GPS) RWY 18

PORTER COUNTY RGNL (VPZ)

RNP APCH-GPS.			MISSED APPROACH: Climb to 2400 direct CUKIK and on track 106° to KLROY and hold.
ASOS <b>125.875</b>	SOUTH BEND APP CON * <b>132.05 257.8</b>	CLNC DEL <b>120.525</b>	UNICOM <b>122.725 (CTAF) 0</b>

ASOS <b>125.875</b>	SOUTH BEND APP CON * <b>132.05 257.8</b>	CLNC DEL <b>120.525</b>	UNICOM <b>122.725 (CTAF) 0</b>
------------------------	---	----------------------------	-----------------------------------



CATEGORY	A	B	C	D
LPV DA	1059-7/8	289 (300-7/8)		NA
LNAV/VNAV DA	1200-1 1/4	430 (500-1 1/4)		NA
LNAV MDA	1200-1	430 (500-1)		NA
CIRCLING	1260-1 490 (500-1)	1300-1 530 (600-1)		NA

HIRL Rwy 9-27 0  
MIRL Rwy 18-36 0  
REIL Rwys 9, 18 and 36 0

VALPARAISO, INDIANA  
Amdt 1 15JUN23

41°27'N-87°00'W

# PORTER COUNTY RGNL (VPZ) RNAV (GPS) RWY 18

EC-2, 20 FEB 2025 to 20 MAR 2025

EC-2, 20 FEB 2025 to 20 MAR 2025