

WAAS CH 42606 W09A	APP CRS 092°	Rwy Idg TDZE Apt Elev	6500 769 770
--	------------------------	-----------------------------	---

RNAV (GPS) RWY 9

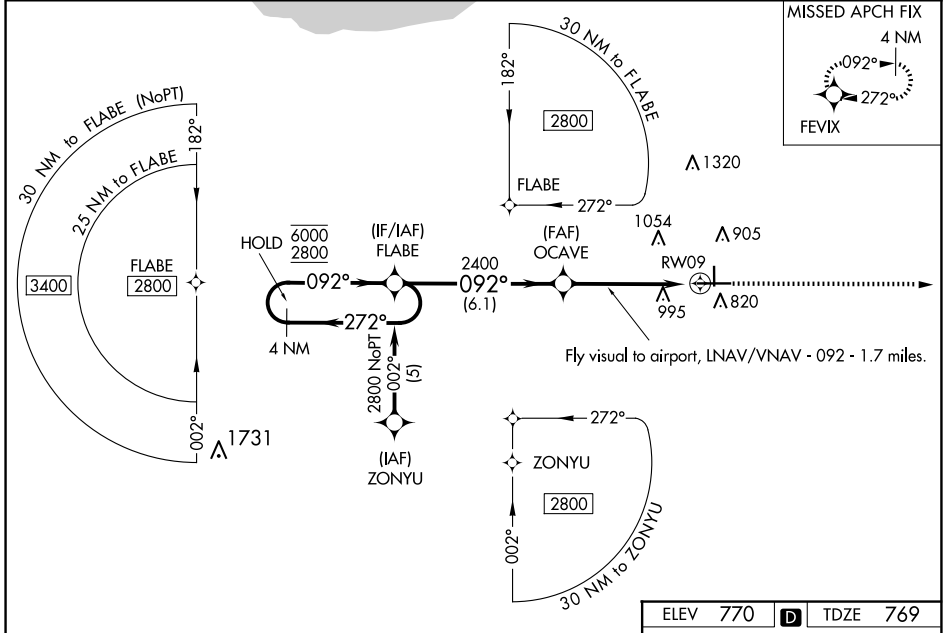
PORTER COUNTY RGNL (VPZ)

RNP APCH.

Rwy 9 helicopter visibility reduction below 3/4 SM NA. For uncompensated Baro-VNAV systems, LNAV/VNAV NA below -16°C or above 47°C.

MISSED APPROACH:
Climb to 2600 direct FEVIX and hold.

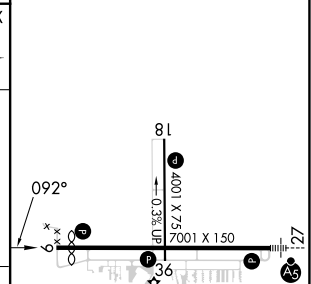
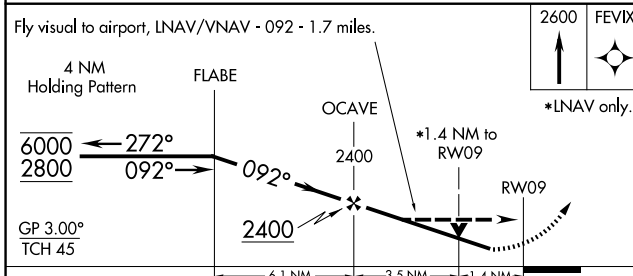
ASOS 125.875	SOUTH BEND APP CON * 132.05 257.8	CLNC DEL 120.525	UNICOM 122.725 (CTAF)
------------------------	---	----------------------------	---------------------------------



EC-2, 20 FEB 2025 to 20 MAR 2025

EC-2, 20 FEB 2025 to 20 MAR 2025

ELEV 770	D	TDZE 769
----------	----------	----------



CATEGORY	A	B	C	D
LPV DA		1038-1	269 (300-1)	
LNAV/VNAV DA		1369-2	600 (600-2)	
LNAV MDA	1260-1	491 (500-1)	1260-1 1/4 491 (500-1 1/4)	1260-1 1/2 491 (500-1 1/2)
CIRCLING	1260-1 490 (500-1)	1300-1 530 (600-1)	1360-1 1/2 590 (600-1 1/2)	1620-2 3/4 850 (900-2 3/4)

HIRL Rwy 9-27

MIRL Rwy 18-36

REIL Rws 9, 18 and 36