

APP CRS	Rwy Idg	<b>4300</b>
<b>103°</b>	TDZE	<b>706</b>
	Apt Elev	<b>706</b>

# RNAV (GPS) RWY 11

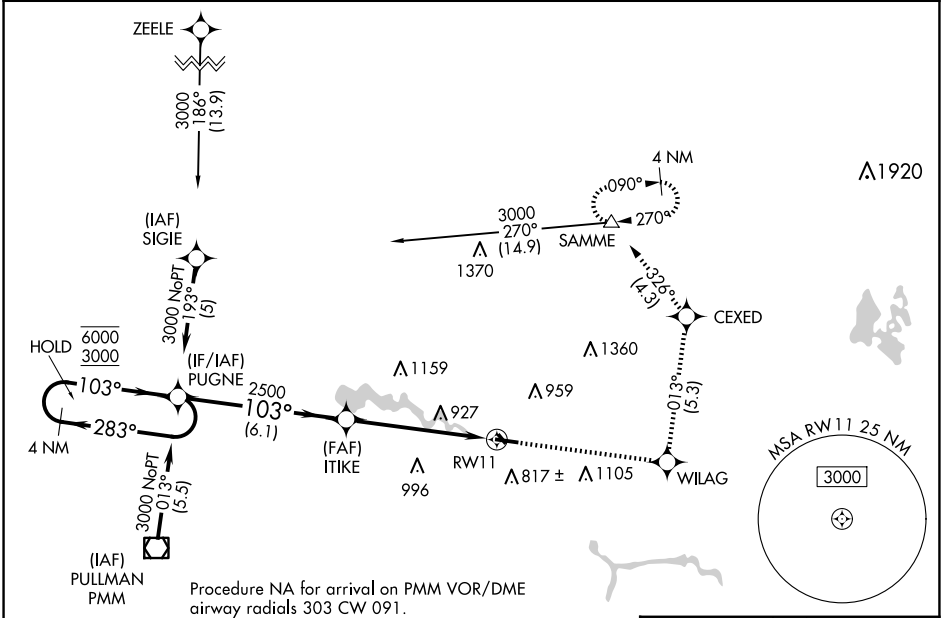
PADGHAM FLD (35D)

RNP APCH - GPS.

**NA** Circling NA to Rwy 15 and 33. Rwy 11 helicopter visibility reduction below ¼ SM NA. Use Holland altimeter setting, when not received use Grand Rapids altimeter setting and increase all MDAs 40 feet and LNAV Cat C visibility ¼ SM.

MISSED APPROACH: Climb to 3000 direct WILAG and on track 013° to CEXED and track 326° to SAMME and hold, continue climb-in-hold to 3000.

BIV ASOS <b>119.025</b>	GREAT LAKES APP CON * <b>128.4 257.6</b>	UNICOM <b>122.8 (CTAF) 0</b>
----------------------------	---	---------------------------------



EC-1, 20 FEB 2025 to 20 MAR 2025

EC-1, 20 FEB 2025 to 20 MAR 2025

	ELEV 706		TDZE 706		
4 NM Holding Pattern	PUGNE	3000	WILAG	CEXED	SAMME
6000 ← 283°	↑	↑	tr 013°	tr 326°	△
3000 → 103°					
			ITIKE		
			2500		
			3.05°		
			TCH 40		
				RW11	
			6.1 NM	5.4 NM	
CATEGORY	A	B	C	D	
LNAV MDA	1220-1	514 (600-1)	1220-1 ⅜ 514 (600-1 ⅜)	NA	
CIRCLING	1280-1 574 (600-1)	1320-1 614 (700-1)	1460-2 ¼ 754 (800-2 ¼)	NA	

