

WAAS CH 45533 W28A	APP CRS 282°	Rwy Idg TDZE Apt Elev	3501 941 941
--	------------------------	-----------------------------	---

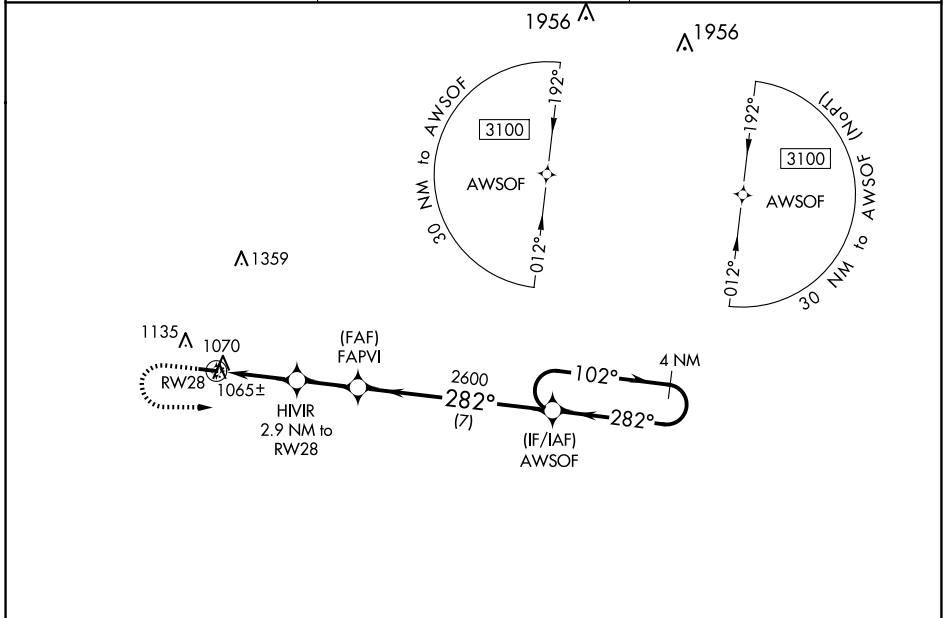
RNAV (GPS) RWY 28

BROOKS FLD (RMY)

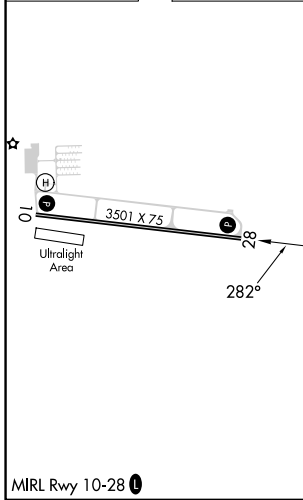
⚠ DME/DME RNP-0.3 NA, VDP NA with Battle Creek altimeter setting. When local altimeter setting not received, use Battle Creek altimeter setting: increase all MDA 40 feet; increase LP and LNAV Cat C visibility $\frac{1}{8}$ SM and Circling Cat C visibility $\frac{1}{4}$ SM. Helicopter visibility reduction below $\frac{3}{4}$ SM NA. Night landing: Rwy 10 NA.

⚠ MISSED APPROACH: Climb to 1500 then climbing left turn to 3100 direct AWSOF and hold.

AWOS-3 120.025	GREAT LAKES APP CON * 119.2 239.25	UNICOM 122.8 (CTAF) 0
--------------------------	--	---------------------------------



ELEV 941	TDZE 941
----------	----------



1500	3100	AWSOF	VGSI and descent angles not coincident (VGSI Angle 4.00/TCH 37).		4 NM Holding Pattern
HIWIR 2.9 NM to RW28		FAPVI	AWSOF		
RW28		2600		3100	
TCH 40		282°		102°	
1900		282°		282°	
-2.9 NM		2.2 NM		7 NM	
CATEGORY	A	B	C	D	
LP MDA	1300-1			359 (400-1)	
LNAV MDA	1320-1	379 (400-1)		1320-1 $\frac{1}{8}$ 379 (400-1 $\frac{1}{8}$)	
CIRCLING	1440-1	499 (500-1)		1660-2 719 (800-2)	

EC-1, 20 FEB 2025 to 20 MAR 2025

EC-1, 20 FEB 2025 to 20 MAR 2025