

APP CRS	Rwy Idg	3801
066°	TDZE	628
	Apt Elev	635

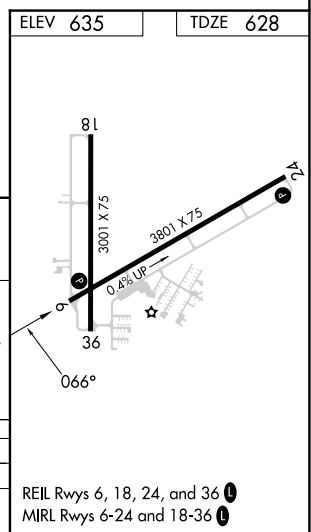
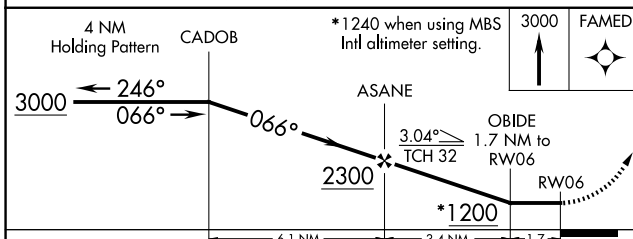
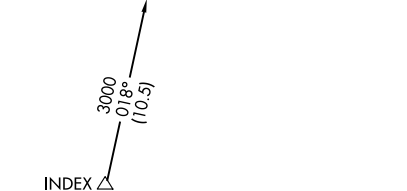
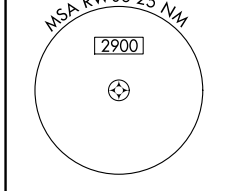
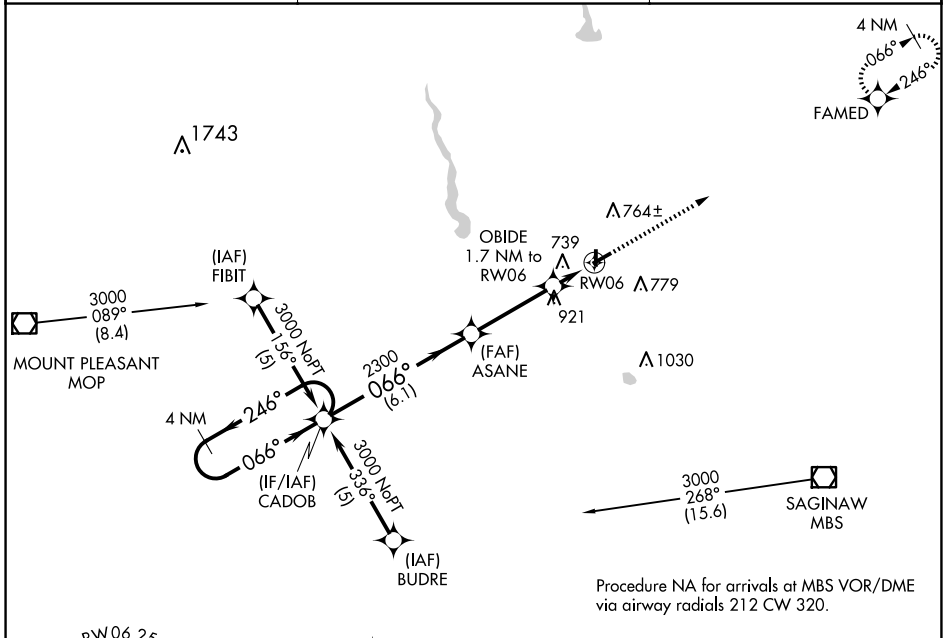
RNAV (GPS) RWY 6

JACK BARSTOW (IKW)

▽ DME/DME RNP-0.3 NA. Rwy 24 helicopter visibility reduction below ¾ SM NA.
▲ When local altimeter setting not received, use MBS Intl altimeter setting and increase all MDA 40 feet and LNAV Cat C visibility ¼ mile. Circling Rwy 18, 36 NA at night.

MISSED APPROACH: Climb to 3000 direct FAMED and hold.

AWOS-3 119.525	GREAT LAKES APP CON ★ 126.45 235.625	UNICOM 122.8 (CTAF) 0
--------------------------	--	---------------------------------



CATEGORY	A	B	C	D
LNAV MDA	1000-1	372 (400-1)		NA
CIRCLING	1120-1	485 (500-1)	1240-1¾ 605 (700-1¾)	NA

REIL Rwy 6, 18, 24, and 36 0
 MIRL Rwy 6-24 and 18-36 0

EC-1, 20 FEB 2025 to 20 MAR 2025

EC-1, 20 FEB 2025 to 20 MAR 2025