

MIDLAND, MICHIGAN

AL-5476 (FAA)

24249

VOR/DME MBS 114.35 Chan 90 (Y)	APP CRS 137°	Rwy Idg TDZE Apt Elev 635	N/A N/A
--	------------------------	--	--------------------------

VOR-A
JACK BARSTOW (IKW)

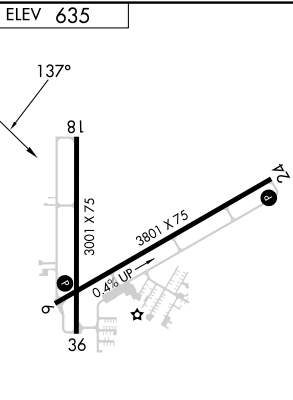
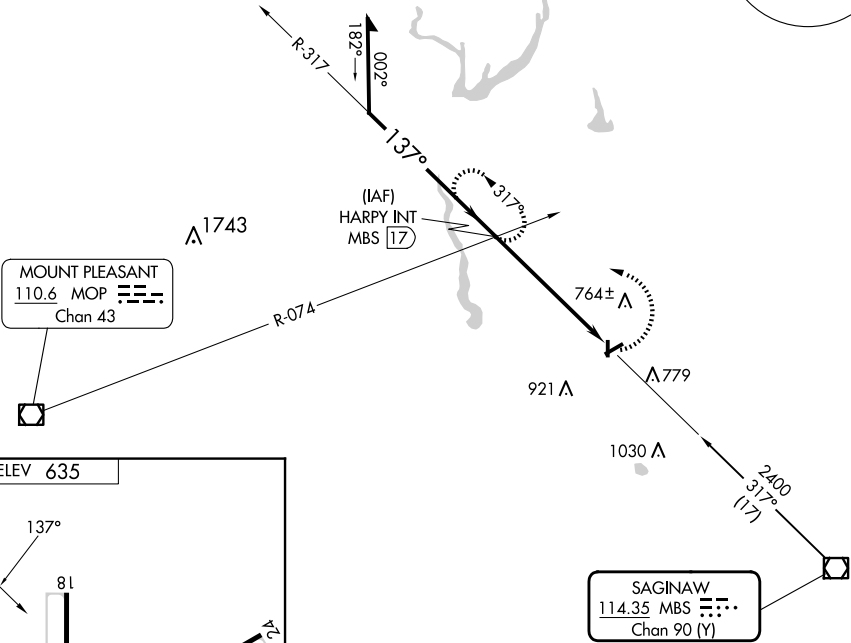
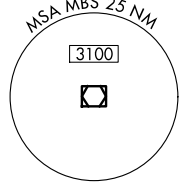
⚠ When local altimeter setting not received, use MBS Intl altimeter setting and increase all MDA 40 feet. Circling Rwy 18, 36 NA at night.
Rwy 18, 36 helicopter visibility reduction below 1 SM NA.

MISSED APPROACH: Climbing left turn to 2400 via heading 272° and MBS VOR/DME R-317 to HARRY INT/17 DME and hold.

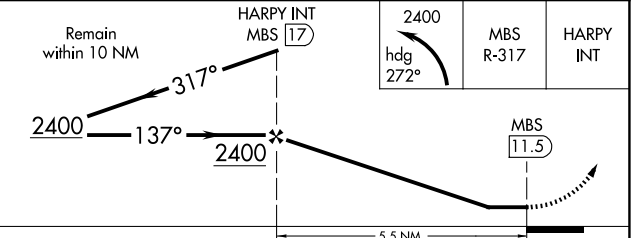
AWOS-3
119.525

GREAT LAKES APP CON ★
126.45 235.625

UNICOM
122.8 (CTAF) 0



REIL Rwys 6, 18, 24 and 36 **0**
MIRL Rwys 6-24 and 18-36 **0**



FAF to MAP 5.5 NM					
Knots	60	90	120	150	180
Min:Sec	5:30	3:40	2:45	2:12	1:50
CATEGORY	A	B	C	D	
CIRCLING	1140-1	505 (600-1)	1240-1¾ 605 (700-1¾)	NA	

MIDLAND, MICHIGAN
Amdt 7B 22APR21

43°40'N-84°16'W

JACK BARSTOW (IKW)
VOR-A

EC-1, 20 FEB 2025 to 20 MAR 2025

EC-1, 20 FEB 2025 to 20 MAR 2025