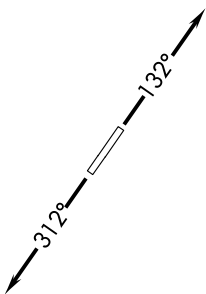


EC-1, 20 FEB 2025 to 20 MAR 2025

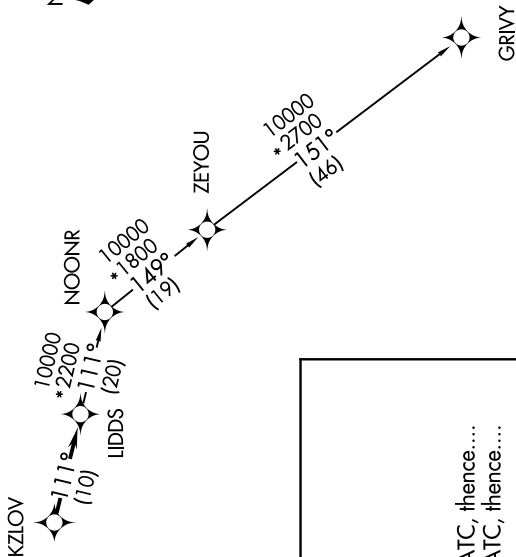
AWOS-3  
118.875  
CINC DEL  
121.725  
CTAF  
123.0  
DETROIT DEP CON  
132.35 284.0

RNAV 1 - DME/DME/IRU or GPS.  
RADAR required.

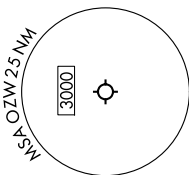
TAKEOFF MINIMUMS:  
Rwy 13, 31: Standard.



TOP ALTITUDE:  
ASSIGNED BY ATC



NOTE: Turbopjet departures at/above 10000,  
maintain 280K until advised by ATC.



NOTE: Chart not to scale.

DEPARTURE ROUTE DESCRIPTION

TAKEOFF RUNWAY 13: Climb on heading 132° or as assigned by ATC, thence....  
 TAKEOFF RUNWAY 31: Climb on heading 312° or as assigned by ATC, thence....  
 ....for RADAR vectors to KZLOV, then on track 111° to LIDDS, then on (transition).  
 Maintain ATC assigned altitude, expect filed altitude 10 minutes after departure.

GRIVY TRANSITION (LIDDS3-GRIVY):

EC-1, 20 FEB 2025 to 20 MAR 2025