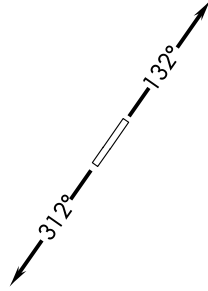


EC-1, 20 FEB 2025 to 20 MAR 2025

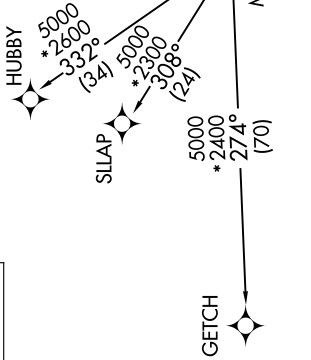
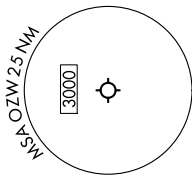
AWOS-3
118.875
CINC DEL
121.725
CTAF
123.0
DETROIT DEP CON
132.35 284.0



NOTE: Chart not to scale.

RNAV 1 - DME/DME/IRU or GPS.
RADAR required.

**TOP ALTITUDE:
ASSIGNED BY ATC**



TAKEOFF MINIMUMS:
Rwys 13, 31: Standard.

NOTE: Jet departures at/above 10000,
maintain 280K until advised by ATC.
NOTE: GETCH TRANSITION: For use by KMKE area
arrivals only, or as assigned by ATC.

DEPARTURE ROUTE DESCRIPTION

TAKEOFF RUNWAY 13: Climb on heading 132° or as assigned by ATC, thence....
TAKEOFF RUNWAY 31: Climb on heading 312° or as assigned by ATC, thence....
...for RADAR vectors to JAXII, then on track 323° to MIGGY, then on (transition).
Maintain 17000 or as assigned by ATC, expect filed altitude 10 minutes after departure.

GETCH TRANSITION (MIGGY3.GETCH):
HUBBY TRANSITION (MIGGY3.HUBBY):
SLLAP TRANSITION (MIGGY3.SLLAP):

EC-1, 20 FEB 2025 to 20 MAR 2025