

(TRMML4.TRMML) 24137

# TRMML FOUR DEPARTURE (RNAV)

LIVINGSTON COUNTY SPENCER J HARDY (OZW)

AL-5485 (FAA)

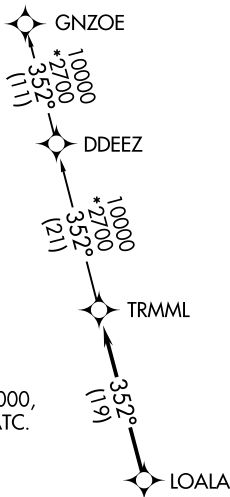
HOWELL, MICHIGAN

**TOP ALTITUDE:  
ASSIGNED BY ATC**

RNAV 1 - DME/DME/IRU or GPS.

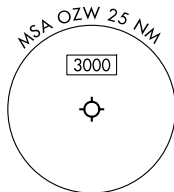
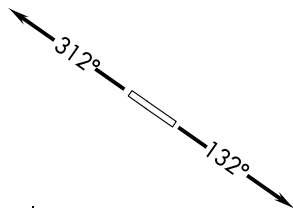
RADAR required.

DETROIT DEP CON  
132.35 284.0  
AWOS-3  
118.875  
CLNC DEL  
121.725  
CTAF  
123.0



TAKEOFF MINIMUMS:  
Rwys 13, 31: Standard.

NOTE: Turbojet departures at/above 10000, maintain 280K until advised by ATC.



NOTE: Chart not to scale.



## DEPARTURE ROUTE DESCRIPTION

TAKEOFF RUNWAY 13: Climb on heading 132° or as assigned by ATC, thence....

TAKEOFF RUNWAY 31: Climb on heading 312° or as assigned by ATC, thence....

....for RADAR vectors to LOALA, then on track 352° to TRMML, then on (transition). Maintain ATC assigned altitude, expect filed altitude 10 minutes after departure.

GNZOE TRANSITION (TRMML4.GNZOE):

# TRMML FOUR DEPARTURE (RNAV)

(TRMML4.TRMML) 16MAY24

HOWELL, MICHIGAN

LIVINGSTON COUNTY SPENCER J HARDY (OZW)

EC-1, 20 FEB 2025 to 20 MAR 2025

EC-1, 20 FEB 2025 to 20 MAR 2025