

WAAS CH 86606 W36B	APP CRS 005°	Rwy Idg 9801 TDZE 595 Apt Elev 629
--	------------------------	---

RNAV (GPS) RWY 36R

HUNTSVILLE INTL-CARL T JONES FLD (HSV)

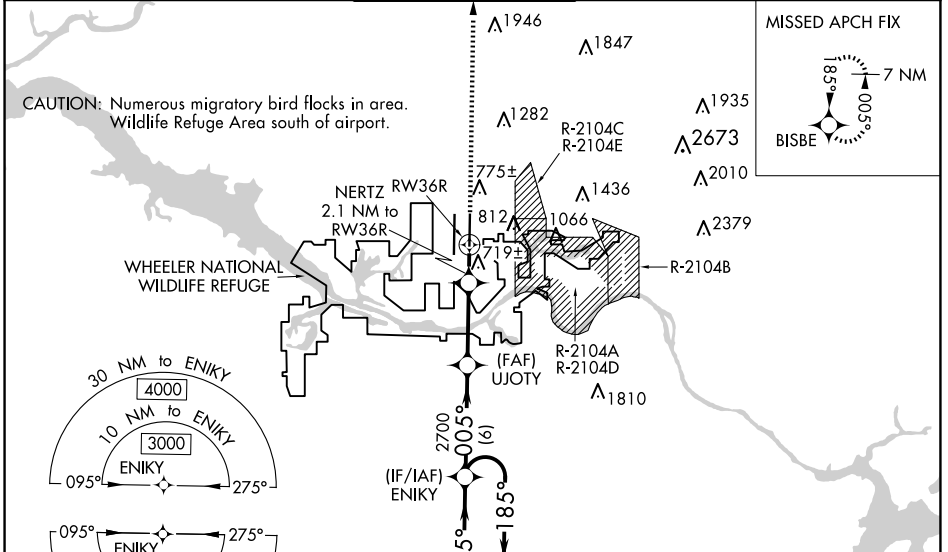
RNP APCH - GPS.

ASR Circling NA for Cats C/D/E east of Rwy 18L-36R. For uncompensated Baro-VNAV systems, LNAV/VNAV NA below -9°C or above 54°C. Simultaneous approach authorized. LNAV procedure NA during simultaneous operations. Use of FD or AP required during simultaneous operations. For inop ALS increase LPV Cat E visibility to RVR 4000, LNAV/VNAV Cat E visibility to RVR 5000 and LNAV Cat E visibility to RVR 6000.

MALSRL

MISSED APPROACH: Climb to 3000 direct BISBE and hold.

ATIS 121.25	HUNTSVILLE APP CON * 125.6 354.1	HUNTSVILLE TOWER * 127.6 (CTAF) 0 350.35	GND CON 121.9 269.525	CLNC DEL 120.35	UNICOM 122.95
-----------------------	--	--	---------------------------------	---------------------------	-------------------------



SE-4, 20 FEB 2025 to 20 MAR 2025

SE-4, 20 FEB 2025 to 20 MAR 2025

ELEV 629	D TDZE 595
----------	-------------------

7 NM Holding Pattern ENIKY VGSI and RNAV glidepath not coincident (VGSI Angle 3.00/TCH 72).

5000 ← 185° → 005° → 005° → 2700

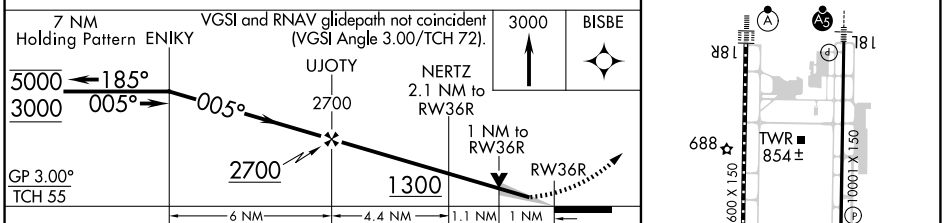
GP 3.00° TCH 55

UJOTY NERTZ 2.1 NM to RW36R

1 NM to RW36R

3000 ↑ BISBE

TDZ/CL Rws 18R and 36L
HIRL Rws 18L-36R and 18R-36L



CATEGORY	A	B	C	D	E
LPV DA		818/24	223 (200-1/2)		
LNAV/DA		939/30	344 (400-5/8)		
LNAV MDA	980/24	385 (400-1/2)	980/35	385 (400-5/8)	
C CIRCLING	1160-1	531 (600-1)	1160-1 1/2 531 (600-1 1/2)	1240-2 611 (700-2)	1260-2 1/4 631 (700-2 1/4)