

LOC/DME I-SMF 111.1 Chan 48	APP CRS 168°	Rwy ldg 8598 TDZE 25 Apt Elev 27
--	------------------------	---

ILS or LOC RWY 17R

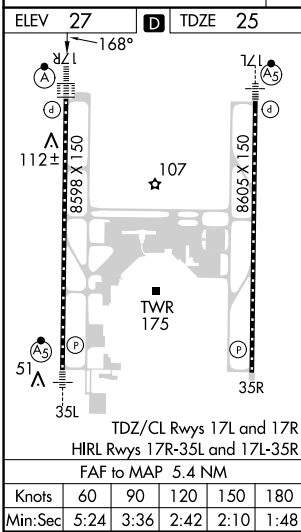
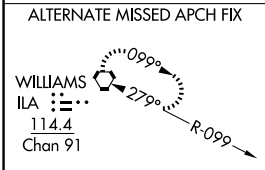
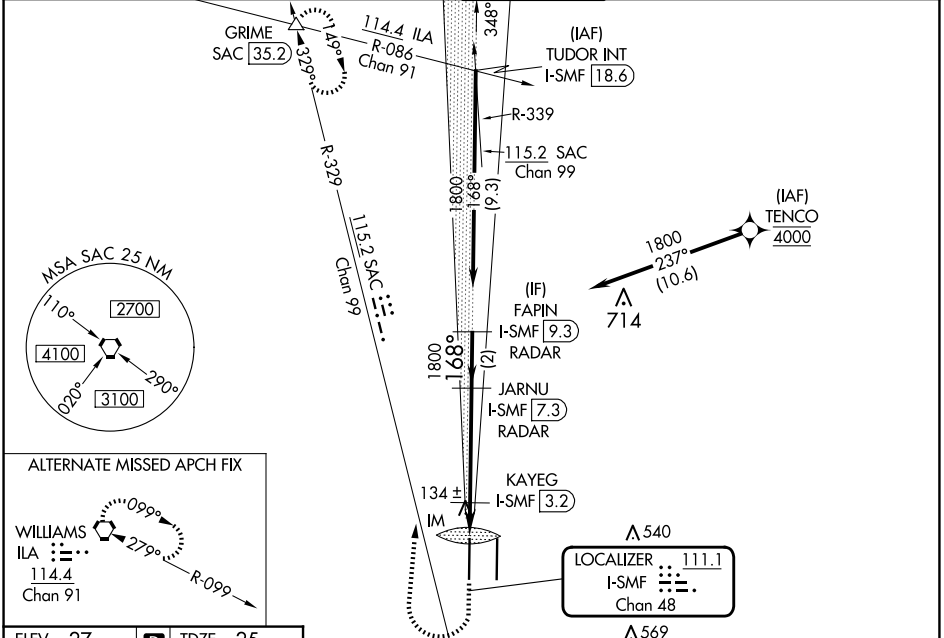
SACRAMENTO INTL (SMF)

Aircraft not GPS equipped - RADAR required for procedure entry.
DME or RADAR required. RNP APCH-GPS. From TENCO.

Simultaneous approach authorized.
Circling NA east of Rwy 17R-35L.

ALSIF-2
MISSED APPROACH: Climb to 500 then climbing right turn to 2000 on heading 350° and SAC VORTAC R-329 to GRIME INT/SAC 35.2 DME and hold.

D-ATIS 126.75	NORCAL APP CON 125.4 259.1 (W-NE) 125.25 257.9 (SW) 127.4 317.5 (E-SE)	CAPITOL TOWER 125.7 256.7	GND CON 121.7 256.7	CLNC DEL 121.1 256.7	CPDLC
-------------------------	--	-------------------------------------	-------------------------------	--------------------------------	-------



ELEV 27	TDZE 25	500	2000	SAC R-329	GRIME	VGSI and ILS glidepath not coincident (VGSI Angle 3.00/TCH 72).	
				JARNU I-SMF 7.3 RADAR	FAPIN I-SMF 9.3 RADAR		
				KAYEG I-SMF 3.2	1800	GS 3.00° TCH 57'	
CATEGORY	A	B	C	D			
S-ILS 17R	225/18		200 (200-½)				
S-LOC 17R	480/24	455 (500-½)		480/45	455 (500-¾)		
CIRCLING	480-1	453 (500-1)		480-1½	453 (500-1½) 580-2 553 (600-2)		
KAYEG FIX MINIMUMS (DME REQUIRED)							
S-LOC 17R	400/24	375 (400-½)		400/35	375 (400-¾)		
CIRCLING	440-1	480-1 413 (500-1)		480-1 453 (500-1)	480-1½ 453 (500-1½) 580-2 553 (600-2)		

SW-2, 20 FEB 2025 to 20 MAR 2025

SW-2, 20 FEB 2025 to 20 MAR 2025