


LOC/DME I-HUX <b>111.1</b> Chan <b>48</b>	APP CRS <b>348°</b>	Rwy Idg <b>8598</b> TDZE <b>24</b> Apt Elev <b>27</b>
---	------------------------	---

# ILS or LOC RWY 35L

SACRAMENTO INTL (SMF)

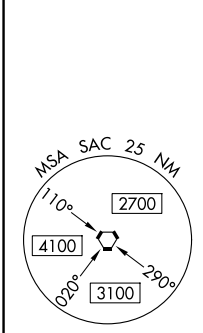
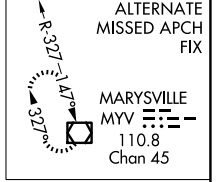
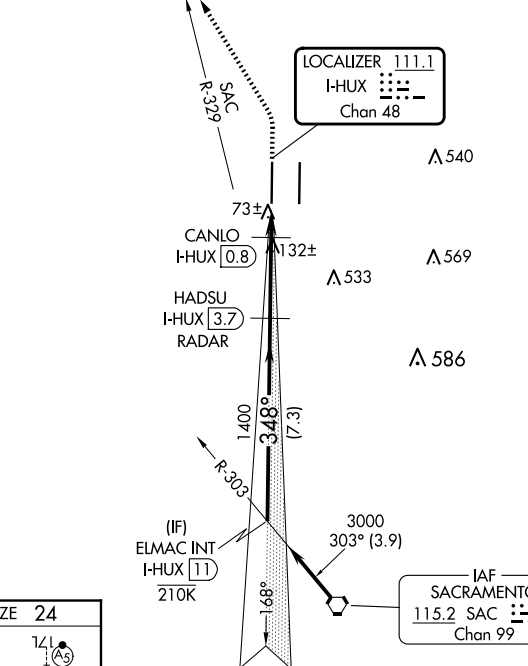
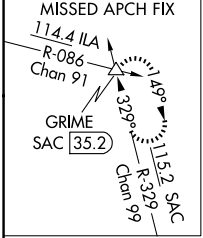
**DME required.**

▼ Circling NA east of Rwy 17R-35L. Autopilot coupled approach NA below 312 MSL. For inop ALS, increase S-LOC 35L Cats C/D visibility to RVR 4500.  
\*RVR 1800 authorized with the use of FD or AP or HUD to DA.

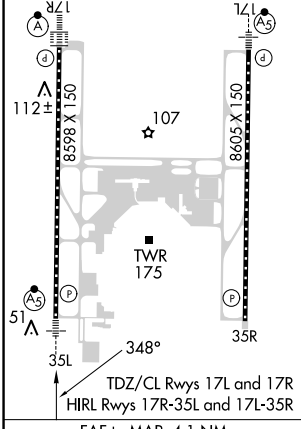
MALSR 

MISSED APPROACH: Climb to 500 then climbing left turn to 2000 on heading 320° and SAC VORTAC R-329 to GRIME INT/SAC 35.2 DME and hold.

D-ATIS <b>126.75</b>	NORCAL APP CON <b>125.4 259.1</b> (W-NE) <b>125.25 257.9</b> (SW) <b>127.4 317.5</b> (E-SE)	CAPITOL TOWER <b>125.7 256.7</b>	GND CON <b>121.7 256.7</b>	CLNC DEL <b>121.1 256.7</b>	CPDLC
-------------------------	---	-------------------------------------	-------------------------------	--------------------------------	-------

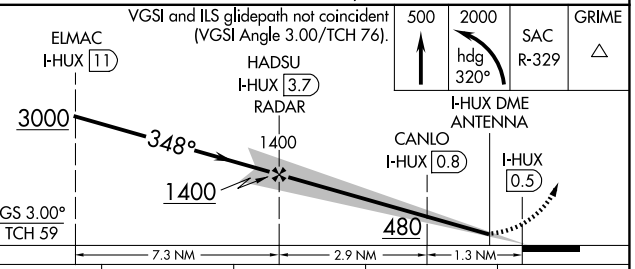


ELEV 27	<b>D</b>	TDZE 24
---------	----------	---------



Knots	60	90	120	150	180
Min:Sec	4:06	2:44	2:03	1:38	1:22

Procedure NA for arrivals on SAC VORTAC airway radials 257 CW 329.



GS 3.00° TCH 59	7.3 NM	2.9 NM	1.3 NM	
CATEGORY	A	B	C	D
S-ILS 35L*	224/24		200 (200-1/2)	
S-LOC 35L	340/24		316 (400-1/2)	
<input checked="" type="checkbox"/> CIRCLING	440-1 413 (500-1)	480-1 453 (500-1)	480-1 1/2 453 (500-1 1/2)	580-2 553 (600-2)

SW-2, 20 FEB 2025 to 20 MAR 2025

SW-2, 20 FEB 2025 to 20 MAR 2025