

# RNAV (RNP) Z RWY 35L

SACRAMENTO INTL (SMF)

APP CRS	Rwy Idg	<b>8598</b>
<b>348°</b>	TDZE	<b>24</b>
	Apt Elev	<b>27</b>

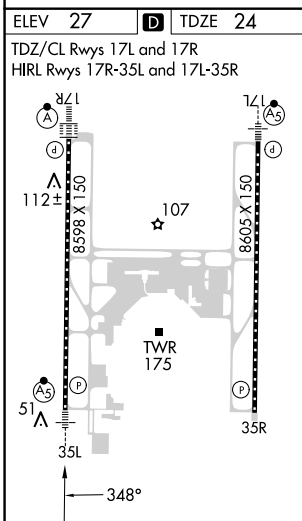
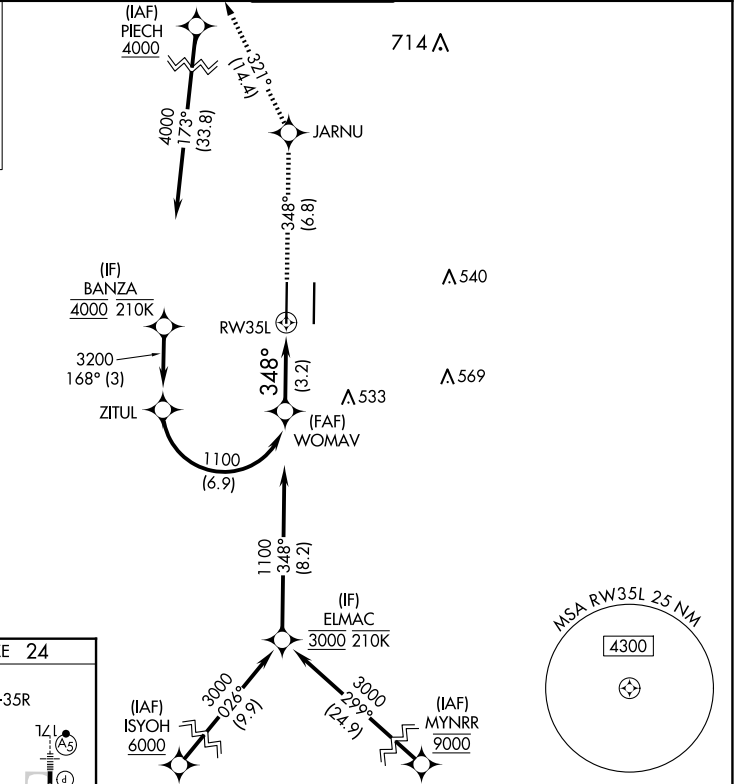
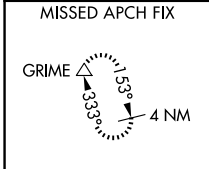
RNP AR APCH-GPS.

▼ For uncompensated Baro-VNAV systems, procedure NA below -2°C or above 54°C. For inop ALS, increase RNP 0.12 all Cats visibility to RVR 4500; increase RNP 0.30 all Cats visibility to RVR 5500.

MALSR

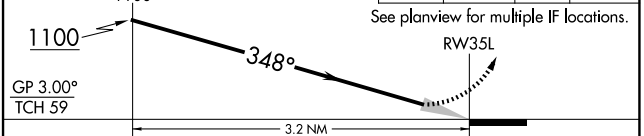
MISSED APPROACH: Climb to 2000 on track 348° to JARNU and track 321° to GRIME and hold.

D-ATIS	NORCAL APP CON	CAPITOL TOWER	GND CON	CLNC DEL	CPDLC
<b>126.75</b>	<b>125.4 259.1 (W-NE) 125.25 257.9 (SW) 127.4 317.5 (E-SE)</b>	<b>125.7 256.7</b>	<b>121.7 256.7</b>	<b>121.1 256.7</b>	



VGSI and RNAV glidepath not coincident (VGSI Angle 3.00/TCH 76).

2000	JARNU	GRIME
tr 348°	tr 321°	△



GP 3.00°				
TCH 59				
3.2 NM				
CATEGORY	A	B	C	D
RNP 0.12 DA	318/24		294 (300-1/2)	
RNP 0.30 DA	382/30		358 (400-5/8)	

**AUTHORIZATION REQUIRED**