

APP CRS <b>348°</b>	Rwy Idg TDZE Apt Elev	<b>8605</b> <b>24</b> <b>27</b>
------------------------	-----------------------------	---------------------------------------

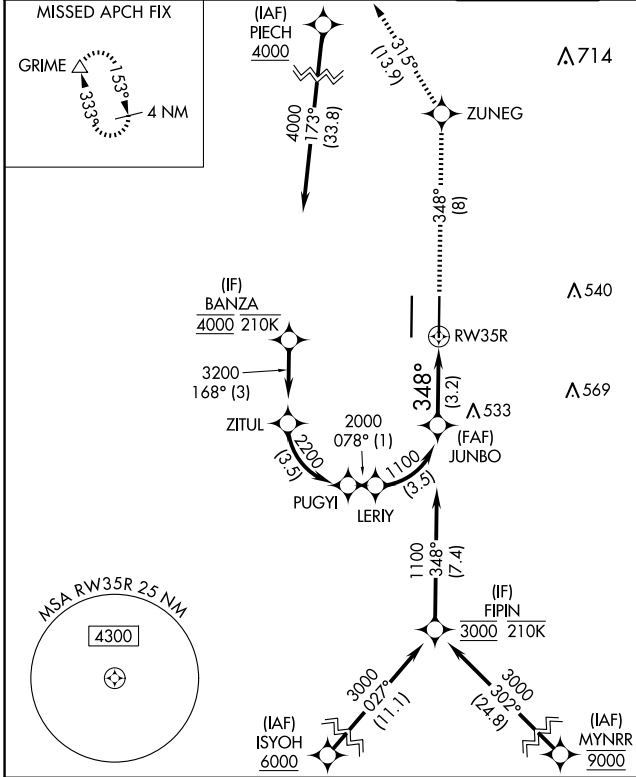
# RNAV (RNP) Z RWY 35R

SACRAMENTO INTL (SMF)

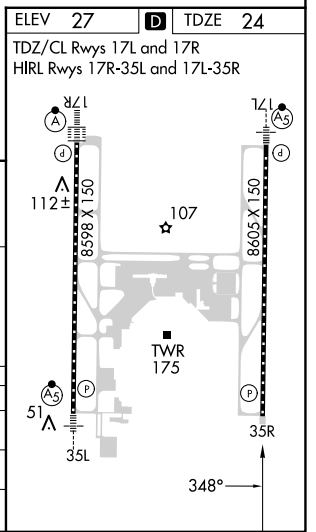
RNP AR APCH-GPS.  
 ▼ For uncompensated Baro-VNAV systems, procedure NA below -2°C or above 54°C.

MISSED APPROACH: Climb to 2000 on track 348° to ZUNEG and on track 315° to GRIME and hold.

D-ATIS <b>126.75</b>	NORCAL APP CON <b>125.4 259.1 (W-NE) 125.25 257.9 (SW) 127.4 317.5 (E-SE)</b>	CAPITOL TOWER <b>125.7 256.7</b>	GND CON <b>121.7 256.7</b>	CLNC DEL <b>121.1 256.7</b>	CPDLC
-------------------------	--	-------------------------------------	-------------------------------	--------------------------------	-------



JUNBO 1100	2000 tr 348°	ZUNEG	tr 315°	GRIME $\Delta$
1100	See planview for multiple IF locations.			
GP 3.00° TCH 64	3.2 NM			
CATEGORY	A	B	C	D
RNP 0.10 DA	316/45 292 (300-7%)			
RNP 0.30 DA	384/55 360 (400-1)			
<b>AUTHORIZATION REQUIRED</b>				



SW-2, 20 FEB 2025 to 20 MAR 2025

SW-2, 20 FEB 2025 to 20 MAR 2025