

WAAS CH <b>82704</b> <b>W35A</b>	APP CRS <b>348°</b>	Rwy ldg <b>5010</b> TDZE <b>951</b> Apt Elev <b>951</b>
----------------------------------------	------------------------	---------------------------------------------------------------

# RNAV (GPS) RWY 35

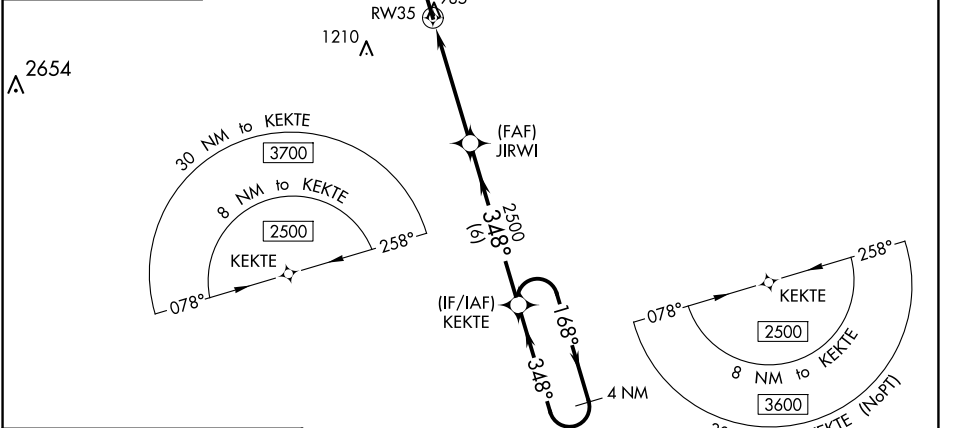
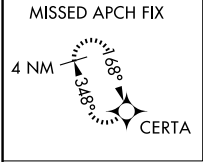
JACKSON COUNTY (JCA)

RNP APCH-GPS.

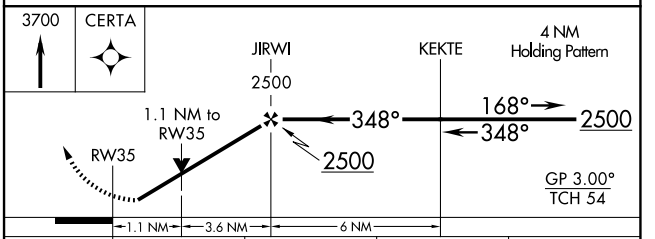
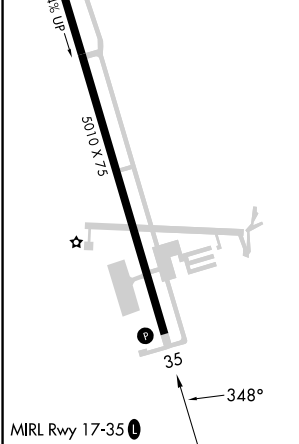
**⚠** For uncompensated Baro-VNAV systems, LNAV/VNAV NA below -16°C or above 54°C.  
**⚠** Circling NA for Cat D west of Rwy 17-35. Baro-VNAV and VDP NA when using Winder altimeter setting. Rwy 17 helicopter visibility reduction below ¼ SM NA. When local altimeter setting not received, use Winder altimeter setting; increase LPV DA to 1232 feet and visibility all Cats ½ SM; increase LNAV/VNAV DA to 1241 feet and visibility all Cats ½ SM; increase all MDAs 40 feet and LNAV visibility Cats C/D ½ SM.

**MISSED APPROACH:**  
Climb to 3700 direct CERTA and hold.

AWOS-3PT <b>118.125</b>	ATLANTA APP CON* <b>132.475 291.1</b>	UNICOM <b>122.975 (CTAF) ①</b>
----------------------------	------------------------------------------	-----------------------------------



ELEV 951	TDZE 951
----------	----------



CATEGORY	A	B	C	D
LPV DA		1201- <sup>7</sup> / <sub>8</sub>	250 (300- <sup>7</sup> / <sub>8</sub> )	
LNAV/VNAV DA		1210- <sup>7</sup> / <sub>8</sub>	259 (300- <sup>7</sup> / <sub>8</sub> )	
LNAV MDA	1340-1	389 (400-1)	1340-1 <sup>1</sup> / <sub>8</sub>	389 (400-1 <sup>1</sup> / <sub>8</sub> )
<b>C</b> CIRCLING	1440-1	489 (500-1)	1580-1 <sup>3</sup> / <sub>4</sub> 629 (700-1 <sup>3</sup> / <sub>4</sub> )	1580-2 629 (700-2)