

VOR/DME AHN 116.95 Chan 116 (Y)	APP CRS 319°	Rwy Idg 5010 TDZE 951 Apt Elev 951
---	------------------------	---

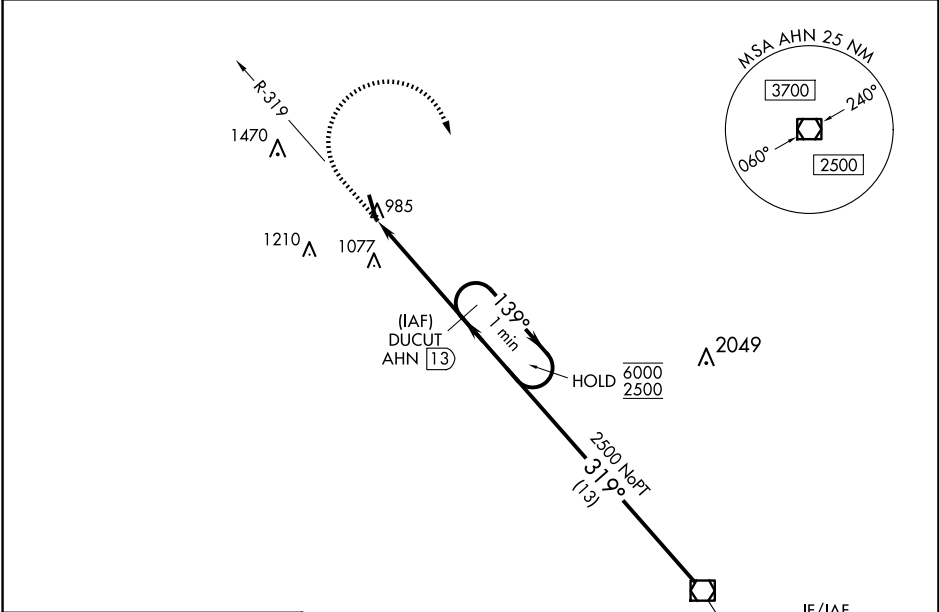
VOR RWY 35
JACKSON COUNTY (JCA)

DME required.

⚠ Circling NA for Cat D southwest of Rwy 17-35. Rwy 35 helicopter visibility reduction below 1 SM NA. Procedure NA at night. When local altimeter setting not received, use Winder altimeter setting and increase all MDA 40 feet and S-35 Cats C/D visibility 1/8 SM.

MISSED APPROACH: Climb to 1700 then climbing right turn to 2500 on heading 200° and AHN VOR/DME R-319 to DUCUT/AHN 13 DME and hold.

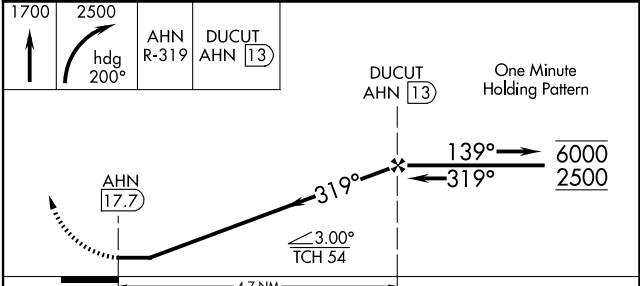
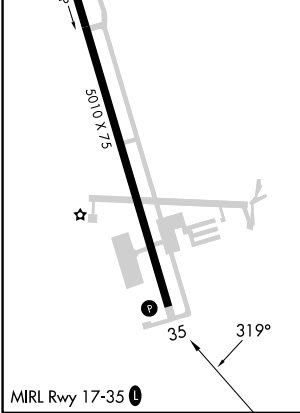
AWOS-3PT 118.125	ATLANTA APP CON ★ 132.475 291.1	UNICOM 122.975 (CTAF) 0
----------------------------	---	--



ELEV 951	TDZE 951
----------	----------

Procedure NA for arrival on AHN VOR/DME airway radials 297 CW 340.

IF/IAF
ATHENS
116.95 AHN
Chan 116 (Y)



CATEGORY	A	B	C	D
S-35	1380-1	429 (500-1)	1380-1¼	429 (500-1¼)
CIRCLING	1440-1	489 (500-1)	1580-1¾ 629 (700-1¾)	1580-2 629 (700-2)

SE-4, 20 FEB 2025 to 20 MAR 2025

SE-4, 20 FEB 2025 to 20 MAR 2025