

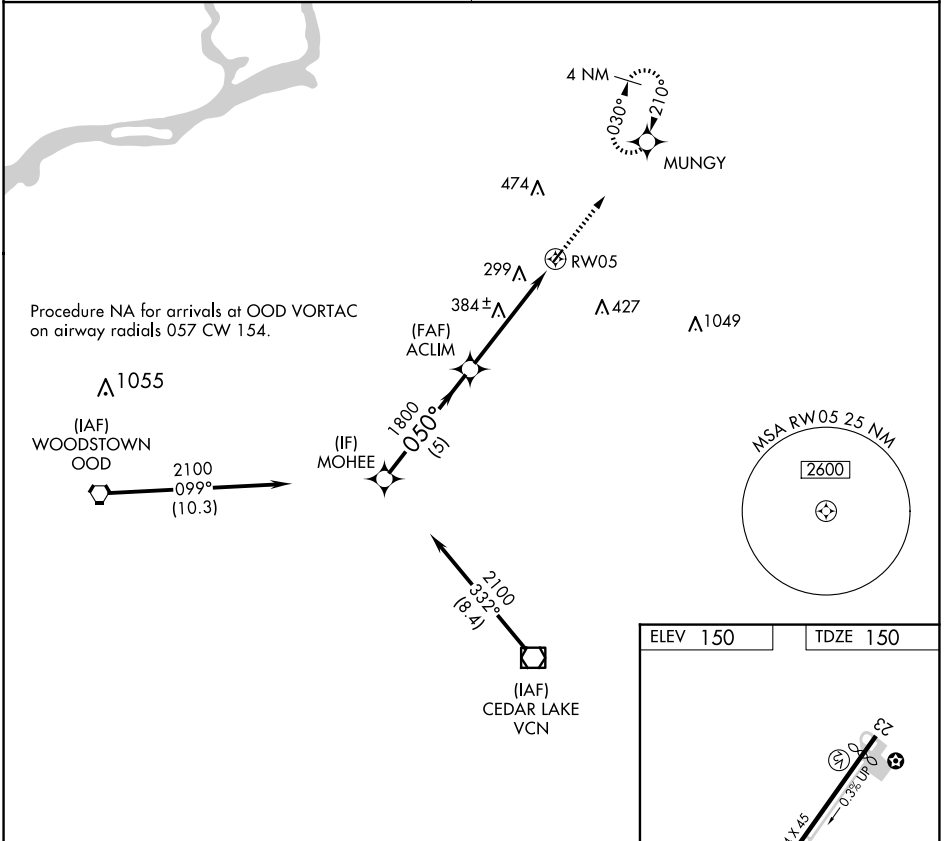
APP CRS	Rwy Idg	2354
050°	TDZE	150
	Apt Elev	150

RNAV (GPS) RWY 5

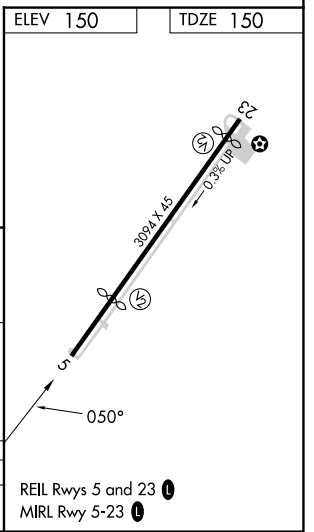
PINE VALLEY (19N)

RNP APCH.	<p>Rwy 5 helicopter visibility reduction below 1 SM NA. Procedure NA at night. Use Mount Holly altimeter setting; when not received use Philadelphia Intl altimeter setting and increase all MDA 20 feet.</p>	<p>MISSED APPROACH: Climb to 2000 direct MUNGY and hold.</p>
<p>▼ Rwy 5 helicopter visibility reduction below 1 SM NA. ▲ NA Procedure NA at night. Use Mount Holly altimeter setting; when not received use Philadelphia Intl altimeter setting and increase all MDA 20 feet.</p>		

MC GUIRE APP CON 126.475 363.8	UNICOM 123.0 (CTAF)
--	-------------------------------



MOHEE	Visual Segment - Obstacles.		2000	MUNGY
2100	050°	ACLIM	1800	RW05
5 NM		5 NM		
CATEGORY	A	B	C	D
LNAV MDA	740-1 590 (600-1)		NA	



NE-2, 20 FEB 2025 to 20 MAR 2025

NE-2, 20 FEB 2025 to 20 MAR 2025