

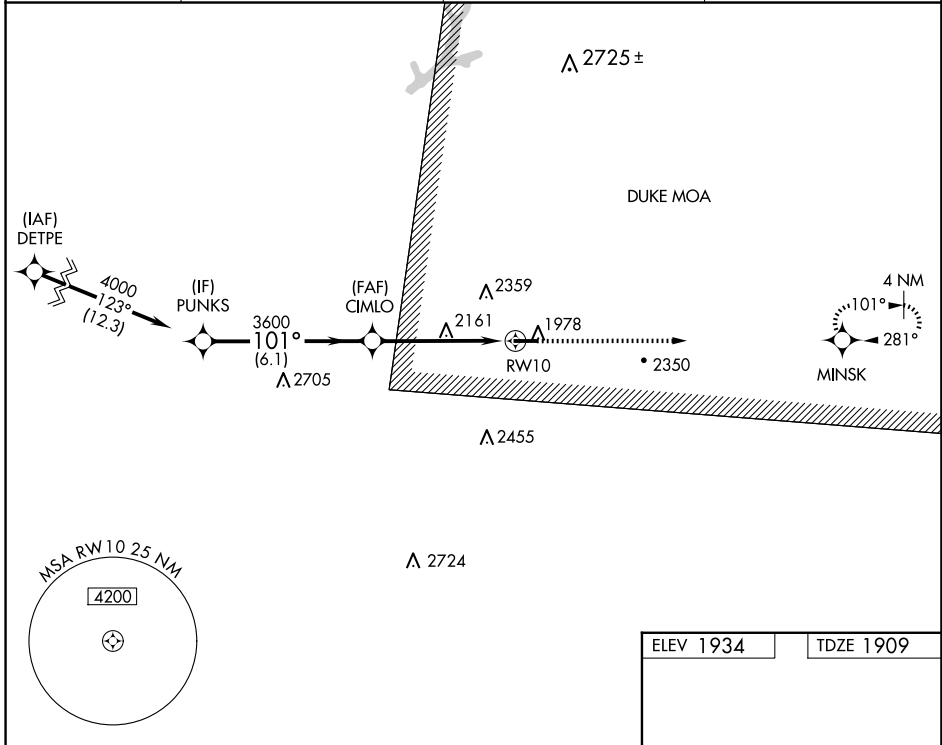
APP CRS	Rwy Idg	4300
101°	TDZE	1909
	Apt Elev	1934

RNAV (GPS) RWY 10

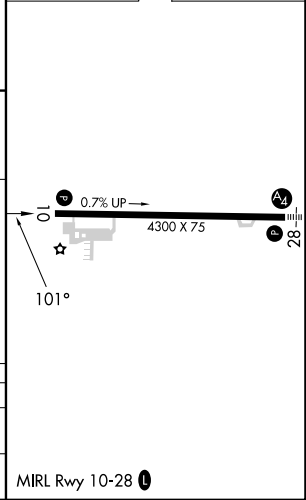
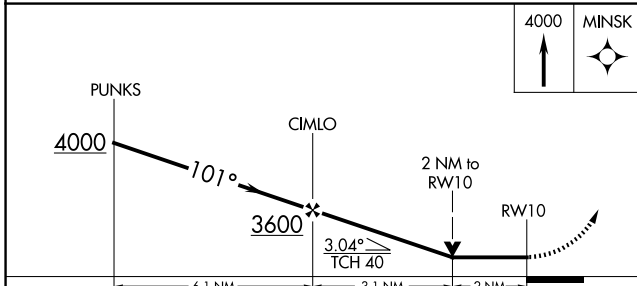
ST MARYS MUNI (OYM)

RNP APCH - GPS.		MISSED APPROACH: Climb to 4000 direct MINSK and hold.
Rwy 10 helicopter visibility reduction below 3/4 SM NA. VDP NA when using Bradford altimeter setting. When local altimeter setting not received, use Bradford altimeter setting and increase all MDA 240 feet, and LNAV visibility Cat A/B 1/4 SM, visibility Cat C/D 5/8 SM, and Circling visibility Cat A/B 1/2 SM, visibility Cat C 3/4 SM.		

AWOS-3P 118.05	CLEVELAND CENTER 126.725 291.65	ALTOONA CLNC DEL 122.4	UNICOM 122.7 (CTAF) 0
--------------------------	---	----------------------------------	---------------------------------



ELEV 1934	TDZE 1909
-----------	-----------



CATEGORY	A	B	C	D
LNAV MDA	2580-1	671 (700-1)	2580-1 7/8	671 (700-1 7/8)
CIRCLING	2620-1 686 (700-1)	2660-1 726 (800-1)	2700-2 1/4 766 (800-2 1/4)	2840-3 906 (1000-3)

NE-4, 20 FEB 2025 to 20 MAR 2025

NE-4, 20 FEB 2025 to 20 MAR 2025