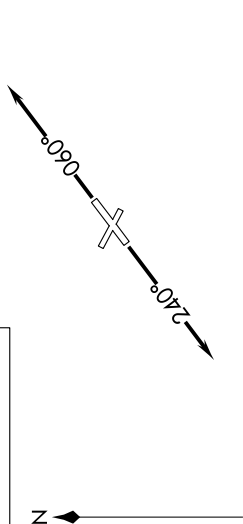
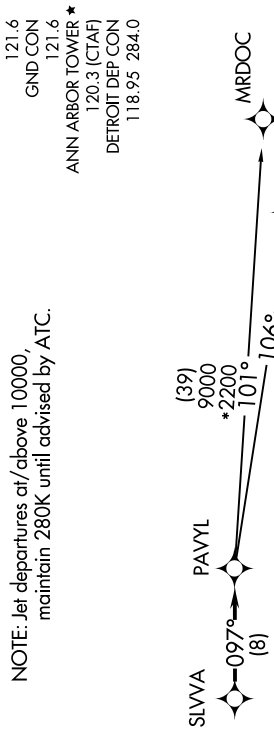
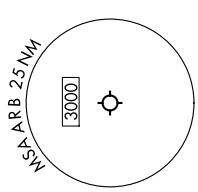


**TOP ALTITUDE:
ASSIGNED BY ATC**

RNAV 1 - DME/DME/IRU or GPS.
RADAR required.



ATIS
134.55
CLINC DEL
121.6
GND CON
121.6
ANN ARBOR TOWER *
120.3 (CTAF)
DETROIT DEP CON
118.95 284.0



TAKEOFF MINIMUMS:
Rwys 12, 30: NA - Environmental.
Rwys 6, 24: Standard.

NOTE: Chart not to scale.

DEPARTURE ROUTE DESCRIPTION

TAKEOFF RUNWAY 6: Climb on heading 060° or as assigned by ATC, thence....
TAKEOFF RUNWAY 24: Climb on heading 240° or as assigned by ATC, thence....

...for RADAR vectors to SLVVA, then on track 097° to PAVYL, then on (transition). Maintain 17000 or as assigned by ATC, expect filed altitude 10 minutes after departure.

ESSBE TRANSITION (PAVYL3.ESSBE):
MRDOC TRANSITION (PAVYL3.MRDOC):