

(ZETTR4.ZETTR) 24137

# ZETTR FOUR DEPARTURE (RNAV)

AL-5506 (FAA)

ANN ARBOR MUNI (ARB)

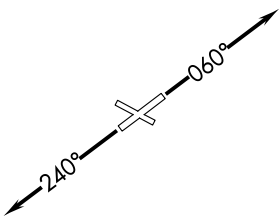
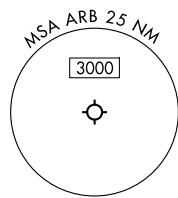
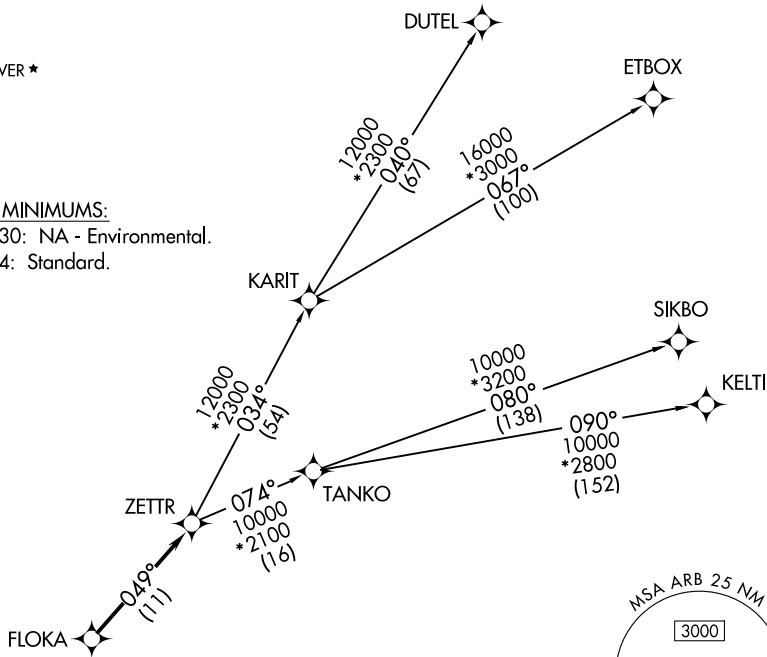
ANN ARBOR, MICHIGAN

DETROIT DEP CON  
118.95 284.0  
ATIS  
134.55  
CLNC DEL  
121.6  
GND CON  
121.6  
ANN ARBOR TOWER \*  
120.3 (CTAF)

RNAV 1 - DME/DME/IRU or GPS.  
RADAR required.

**TOP ALTITUDE:  
ASSIGNED BY ATC**

**TAKEOFF MINIMUMS:**  
Rwys 12, 30: NA - Environmental.  
Rwys 6, 24: Standard.



NOTE: Turbojet departures at/above 10000, maintain 280K until advised by ATC.  
NOTE: TANKO Transition: For use by CYYZ area arrivals only, or as assigned by ATC.

NOTE: Chart not to scale.

## DEPARTURE ROUTE DESCRIPTION

**TAKEOFF RUNWAY 6:** Climb on heading 060° or as assigned by ATC, then...

**TAKEOFF RUNWAY 24:** Climb on heading 240° or as assigned by ATC, then...

...for RADAR vectors to FLOKA, then on track 049° to ZETTR, then on (transition). Maintain ATC assigned altitude, expect filed altitude 10 minutes after departure.

**DUTEL TRANSITION (ZETTR4.DUTEL):**

**ETBOX TRANSITION (ZETTR4.ETBOX):**

**KELTI TRANSITION (ZETTR4.KELTI):**

**SIKBO TRANSITION (ZETTR4.SIKBO):**

**TANKO TRANSITION (ZETTR4.TANKO):**

**ZETTR FOUR DEPARTURE (RNAV)**  
(ZETTR4.ZETTR) 16MAY24

ANN ARBOR, MICHIGAN  
ANN ARBOR MUNI (ARB)

EC-1, 20 FEB 2025 to 20 MAR 2025

EC-1, 20 FEB 2025 to 20 MAR 2025