

(DAWNN1.DAWNN) 23334
DAWNN ONE DEPARTURE

AL-5514 (FAA)

SHELBYVILLE MUNI (GÆZ)
 SHELBYVILLE, INDIANA

ASOS
 121.55
 INDIANAPOLIS DEP CON
 127.15 317.8

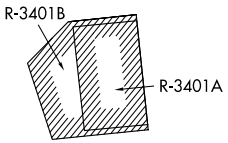
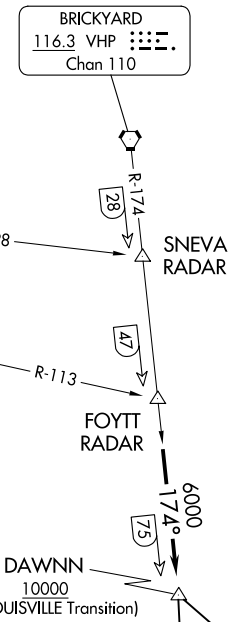
BRICKYARD
 116.3 VHP
 Chan 110

**TOP ALTITUDE:
 ASSIGNED BY ATC**

R-098
 TERRE HAUTE
 115.3 TTH
 Chan 100

R-113
 HOOSIER
 110.2 OOM
 Chan 39

TAKEOFF MINIMUMS:
 Rwy 1, 19: Standard.
 Rwy 9, 27: NA - Environmental



LOUISVILLE
 114.8 IU
 Chan 95

MYSTIC
 108.2 MYS

EC-2, 20 FEB 2025 to 20 MAR 2025

EC-2, 20 FEB 2025 to 20 MAR 2025

- NOTE: RADAR required.
- NOTE: Select appropriate localizer/DME frequency/channel prior to departure.
- NOTE: Turbojets accelerate to 250K until reaching 10000, if unable advise ATC.
- NOTE: Assigned to aircraft with a requested altitude of 11000 or above.

(NARRATIVE ON FOLLOWING PAGE)

NOTE: Chart not to scale.

DAWNN ONE DEPARTURE
 (DAWNN1.DAWNN) 07DEC17

SHELBYVILLE, INDIANA
 SHELBYVILLE MUNI (GÆZ)



DEPARTURE ROUTE DESCRIPTION

DEPARTING ALL OTHER AUTHORIZED RUNWAYS/AIRPORTS: Climb on assigned heading to assigned altitude. Thence....

....on RADAR vectors to join VHP R-174 to DAWNN INT then on transition or assigned route. Expect clearance to requested altitude ten minutes after departure.

LOUISVILLE TRANSITION (DAWNN1.IIU): From over DAWNN INT on IIU R-311 to IIU VORTAC.

MYSTIC TRANSITION (DAWNN1.MYS): From over DAWNN INT on MYS R-002 to MYS VOR.

EC-2, 20 FEB 2025 to 20 MAR 2025

EC-2, 20 FEB 2025 to 20 MAR 2025