

WAAS CH <b>90203</b> <b>W13A</b>	APP CRS <b>130°</b>	Rwy Idg TDZE Apt Elev	<b>4408</b> <b>2032</b> <b>2034</b>
--	------------------------	-----------------------------	---

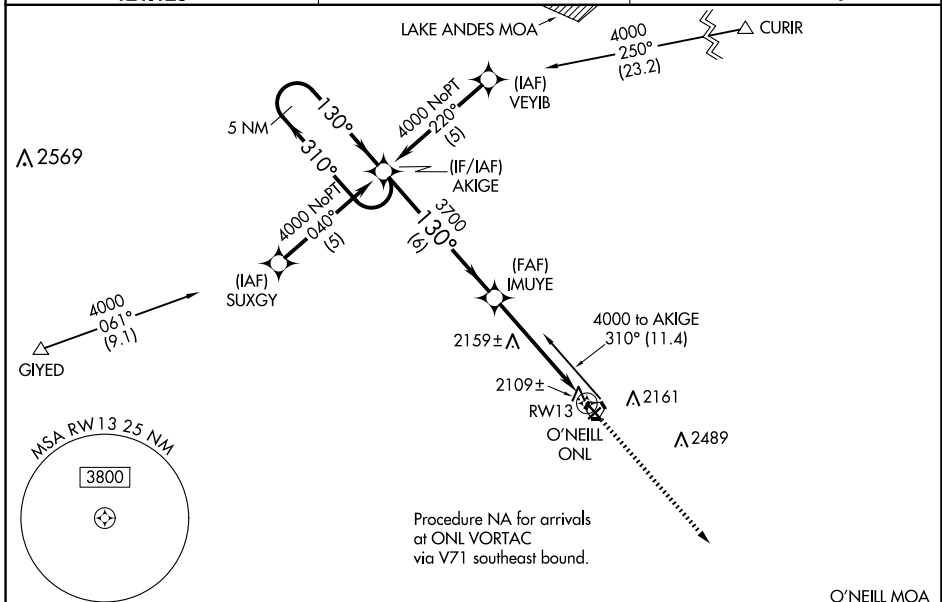
# RNAV (GPS) RWY 13

THE O'NEILL MUNI-JOHN L BAKER FLD (ONL)

**⚠** Baro-VNAV NA when using Evelyn Sharp Fld altimeter setting. For uncompensated Baro-VNAV systems, LNAV/VNAV NA below -19°C (-2°F) or above 54°C (130°F). DME/DME RNP-0.3 NA. Helicopter visibility reduction below ¾ SM NA. When local altimeter setting not received, use Evelyn Sharp Fld altimeter setting and increase LPV DA to 2433 feet, LNAV/VNAV DA to 2505 feet; increase all MDAs 140 feet and visibility Cat C ½ SM. VDP NA when using Evelyn Sharp Fld altimeter setting. Night landing: Rwy 4, 22 NA.

**⚠** MISSED APPROACH: Climb to 4000 direct AFSIC and hold.

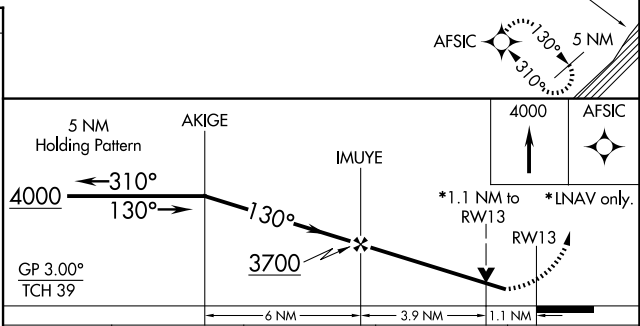
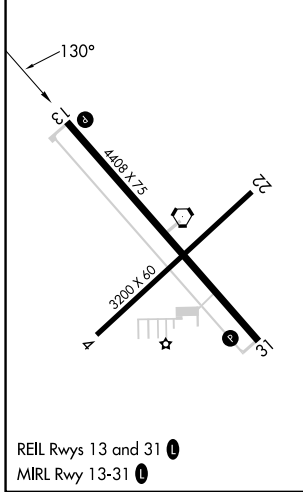
AWOS-3 <b>121.125</b>	MINNEAPOLIS CENTER <b>128.0 257.95</b>	UNICOM <b>122.8 (CTAF) 0</b>
--------------------------	---	---------------------------------



NC-2, 20 FEB 2025 to 20 MAR 2025

NC-2, 20 FEB 2025 to 20 MAR 2025

ELEV 2034	TDZE 2032
-----------	-----------



CATEGORY	A	B	C	D
LPV DA	2308-1 276 (300-1)			NA
LNAV/VNAV DA	2380-1¼ 348 (400-1¼)			NA
LNAV MDA	2420-1 388 (400-1)			NA
CIRCLING	2600-1 566 (600-1)		2680-1¾ 646 (700-1¾)	NA