

| | | |
|--|------------------------|---|
| WAAS CH 42738 W02A | APP CRS 017° | Rwy Idg 6904 TDZE 24 Apt Elev 26 |
|--|------------------------|---|

RNAV (GPS) RWY 2

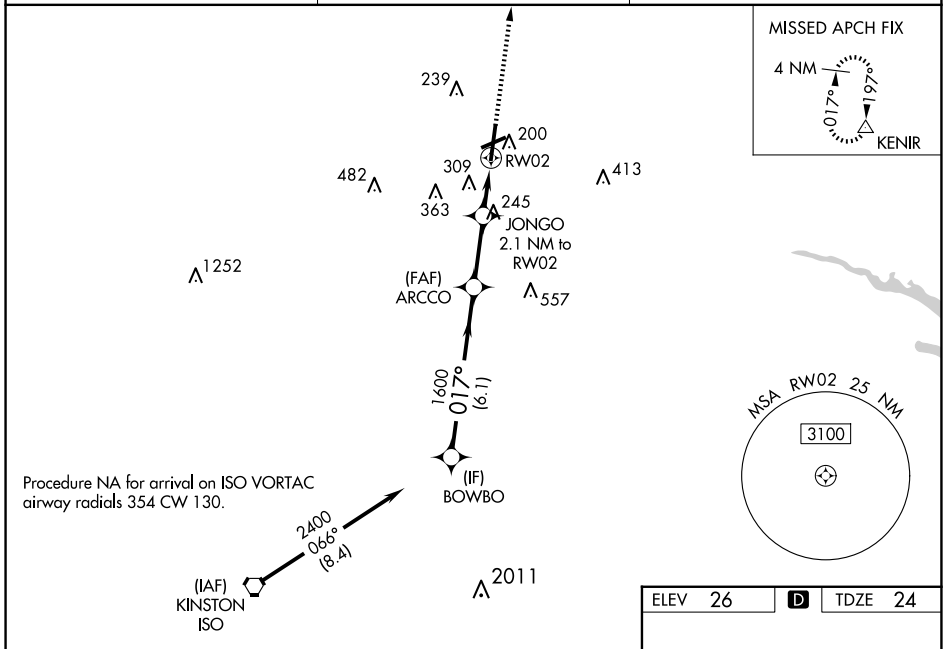
PITT-GREENVILLE (PGV)

RNP APCH-GPS.

⚠ Baro-VNAV NA when using Washington altimeter setting. For uncompensated Baro-VNAV systems, LNAV/VNAV NA below -15°C or above 50°C. Rwy 2 helicopter visibility reduction below 3/4 SM NA. When local altimeter setting not received use Washington altimeter setting and increase LPV DA to 444 feet, visibility all Cats 1/8 SM; increase LNAV/VNAV DA to 661; increase all MDAs 60 feet, LNAV visibility Cat C and D and Circling Cat D 1/4 SM. VDP NA when using Washington altimeter setting.

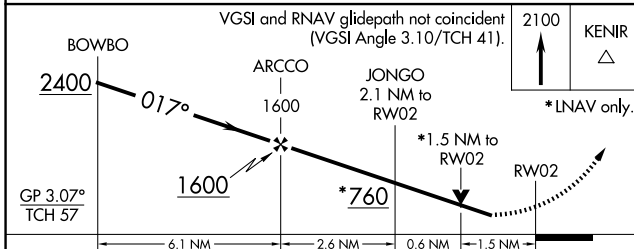
MISSED APPROACH:
Climb to 2100 direct KENIR and hold.

| | | |
|--------------------------|---|---------------------------------|
| AWOS-3 128.425 | WASHINGTON CENTER 123.85 279.65 | UNICOM 122.8 (CTAF) 1 |
|--------------------------|---|---------------------------------|

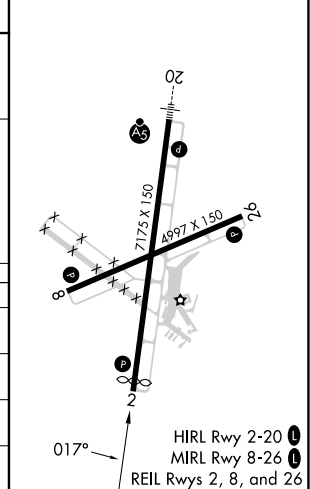


Procedure NA for arrival on ISO VORTAC
airway radials 354 CW 130.

| | | |
|---------|----------|---------|
| ELEV 26 | D | TDZE 24 |
|---------|----------|---------|



| CATEGORY | A | B | C | D |
|-------------------|----------------------|----------------------|----------------------|------------------------------|
| LPV DA | 403-1 | | 379 (400-1) | |
| LNAV/VNAV DA | 620-1 3/4 | | 596 (600-1 3/4) | |
| LNAV MDA | 540-1 | 516 (600-1) | 540-1 3/8 | 516 (600-1 3/8) |
| C CIRCLING | 600-1 574 (600-1) | 620-1 594 (600-1) | 700-2 674 (700-2) | 800-2 1/2 774 (800-2 1/2) |



SE-2, 20 FEB 2025 to 20 MAR 2025

SE-2, 20 FEB 2025 to 20 MAR 2025