

APP CRS	Rwy Idg	4997
076°	TDZE	24
	Apt Elev	26

RNAV (GPS) RWY 8

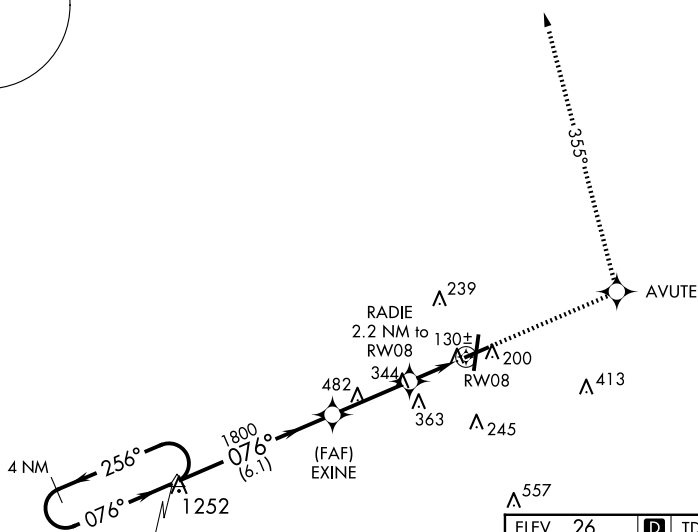
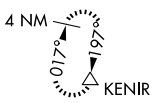
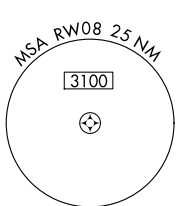
PITT-GREENVILLE (PGV)

RNP APCH - GPS.

⚠ Rwy 8 helicopter visibility reduction below $\frac{3}{4}$ SM NA. When local altimeter setting not received use Washington altimeter setting and increase all MDAs 60 feet, LNAV visibility Cat C and D $\frac{1}{2}$ SM and Circling visibility Cat D $\frac{1}{4}$ SM.

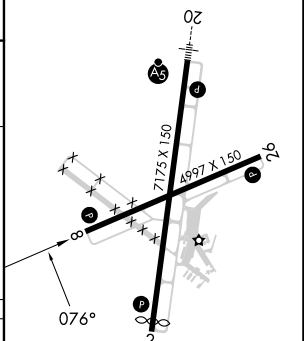
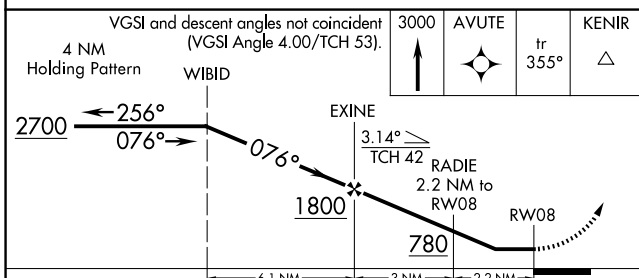
MISSED APPROACH: Climb to 3000 direct AVUTE and via 355° track to KENIR and hold.

AWOS-3 128.425	WASHINGTON CENTER 123.85 279.65	UNICOM 122.8 (CTAF) 0
--------------------------	---	---------------------------------



NoPT for arrivals on V157 southbound.

ELEV	26	D	TDZE	24
------	----	----------	------	----



CATEGORY	A	B	C	D
LNAV MDA	500-1	476 (500-1)	500-1 $\frac{3}{8}$	476 (500-1 $\frac{3}{8}$)
CIRCLING	600-1 574 (600-1)	620-1 594 (600-1)	700-2 674 (700-2)	800-2 $\frac{1}{2}$ 774 (800-2 $\frac{1}{2}$)

HIRL Rwy 2-20 **0**
MIRL Rwy 8-26 **0**
REIL Rwys 2, 8, and 26

SE-2, 20 FEB 2025 to 20 MAR 2025

SE-2, 20 FEB 2025 to 20 MAR 2025