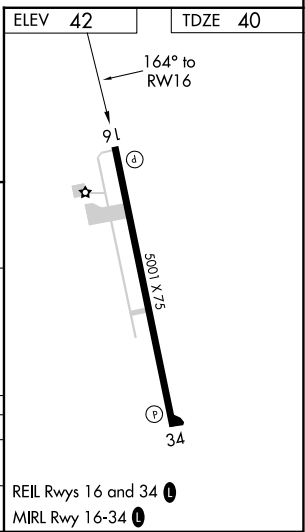
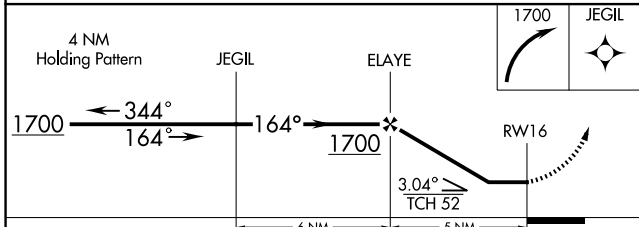
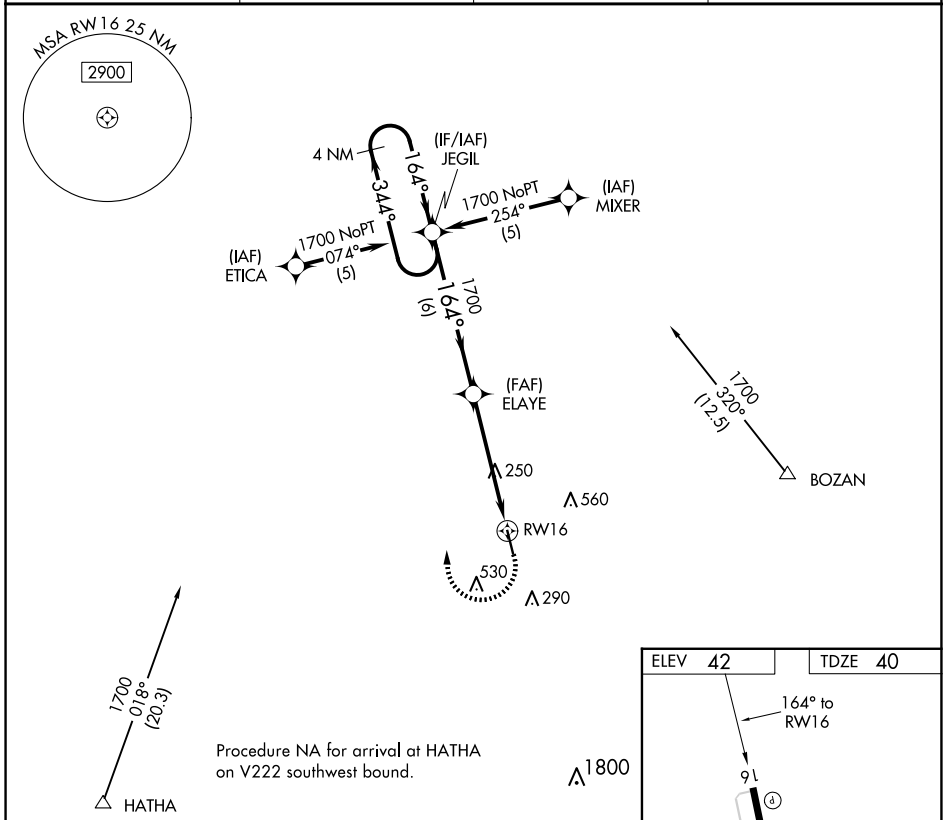


APP CRS 164°	Rwy Idg 5001
	TDZE 40
	Apt Elev 42

RNAV (GPS) RWY 16

EUNICE (4R7)

RNP APCH.		MISSED APPROACH: Climbing right turn to 1700 direct JEGIL WP and hold.	
▼ Use Lafayette Rgnl/Paul Fournet Fld altimeter setting. ▲ NA Procedure NA at night. Rwy 16 helicopter visibility reduction below 1 SM NA.			
LFT ASOS 134.05	LAFAYETTE APP CON ★ 128.7 268.7	GCO 135.075	UNICOM 122.8 (CTAF) ①



CATEGORY	A	B	C	D
RNAV MDA	580-1	540 (600-1)	580-1½ 540 (600-1½)	NA
CIRCLING	620-1	578 (600-1)	940-2¾ 898 (900-2¾)	NA

SC-4, 20 FEB 2025 to 20 MAR 2025

SC-4, 20 FEB 2025 to 20 MAR 2025