

APP CRS <b>011°</b>	Rwy Idg <b>3496</b> TDZE <b>49</b> Apt Elev <b>49</b>
------------------------	---

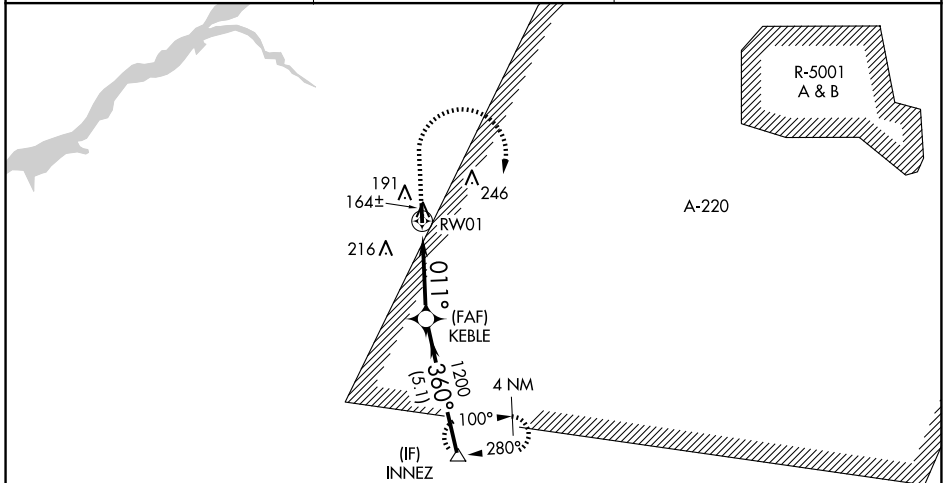
# RNAV (GPS) RWY 1

FLYING W (N14)

**▲** Use Mount Holly altimeter setting; when not received, use Northeast Philadelphia altimeter setting and increase all MDA 40 feet. DME/DME RNP-0.3 NA. Straight-in Rwy 1 NA at night, Circling Rwy 1 NA at night. Rwy 1 helicopter visibility reduction below 1 SM NA.

**MISSED APPROACH:** Climb to 500 then climbing right turn to 2000 direct INNEZ and hold.

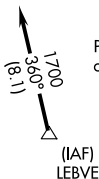
VAY ASOS <b>119.325</b>	MC GUIRE APP CON <b>126.475 363.8</b>	UNICOM <b>122.8 (CTAF) 0</b>
----------------------------	--	---------------------------------



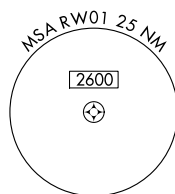
NE-2, 20 FEB 2025 to 20 MAR 2025

NE-2, 20 FEB 2025 to 20 MAR 2025

1049 A



Procedure NA for arrivals on V16 southwest bound.

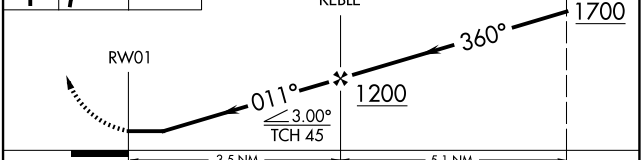


ELEV 49	TDZE 49
---------	---------

MIRL Rwy 1-19  
REIL Rws 1 and 19



500	2000	INNEZ	VGSI and descent angles not coincident (VGSI Angle 3.50/TCH 26).	INNEZ
-----	------	-------	--	-------



CATEGORY	A	B	C	D
LNNAV MDA	420-1	371 (400-1)	NA	
CIRCLING	520-1	471 (500-1)	NA	