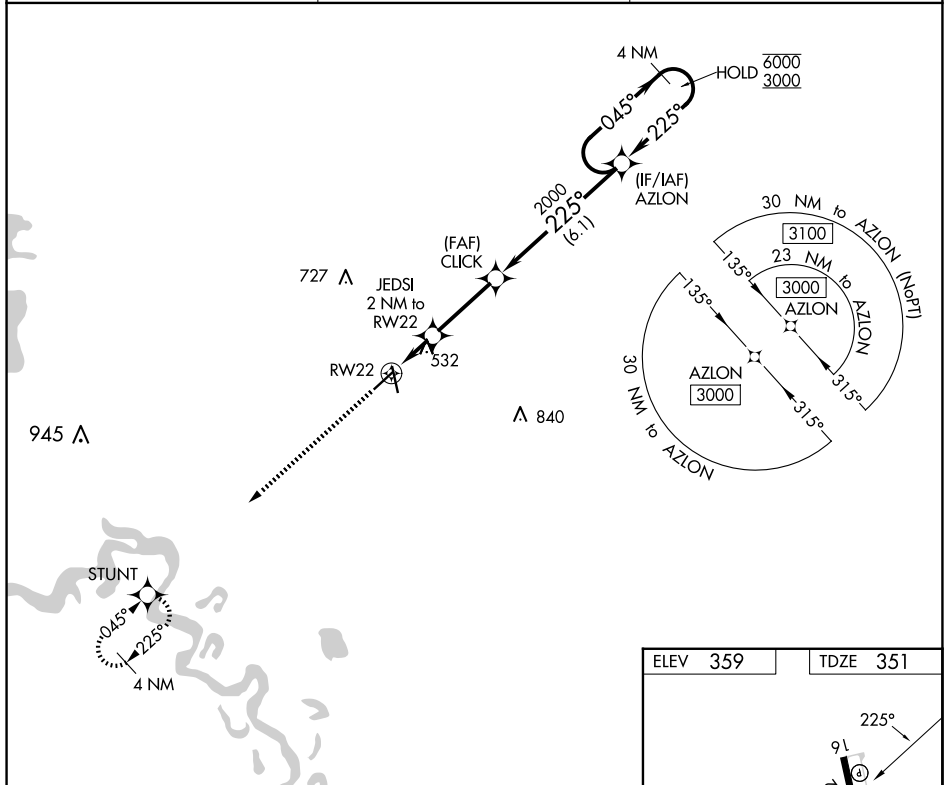


APP CRS	Rwy Idg	<b>4957</b>
<b>225°</b>	TDZE	<b>351</b>
	Apt Elev	<b>359</b>

# RNAV (GPS) RWY 22

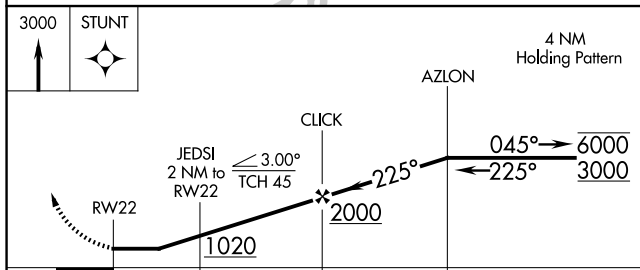
HOPE MUNI (M18)

RNP APCH - GPS		MISSED APPROACH: Climb to 3000 direct STUNT and hold.
▼ NA	Procedure NA at night.	
▲ NA	Rwy 22 helicopter visibility reduction below 1 SM NA. Use Texarkana altimeter setting.	
TXK ASOS	FORT WORTH CENTER	UNICOM
<b>120.2</b>	<b>123.925 269.475</b>	<b>122.8 (CTAF) 1</b>



SC-1, 20 FEB 2025 to 20 MAR 2025

SC-1, 20 FEB 2025 to 20 MAR 2025



ELEV 359	TDZE 351
----------	----------

The diagram shows the runway layout for RWY 22, including taxiway 34 and various navigational aids. Key dimensions include 5301 x 100 ft for the runway and 5501 x 100 ft for the taxiway. Vertical clearances of 0.43° UP and 0.38° UP are indicated.

CATEGORY	A	B	C	D
LNAV MDA	900-1	549 (600-1)	900-1½	549 (600-1½)
CIRCLING	900-1 541 (600-1)	940-1 581 (600-1)	940-1½ 581 (600-1½)	1100-2½ 741 (800-2½)

MIRL Rwy 16-34 1  
REIL Rwy 16 and 34 1