

KARRR SEVEN DEPARTURE (RNAV)  
(KARRR7 .KARRR) 29DEC22

HOUSTON, TEXAS  
SUGAR LAND RGNL (SGR)

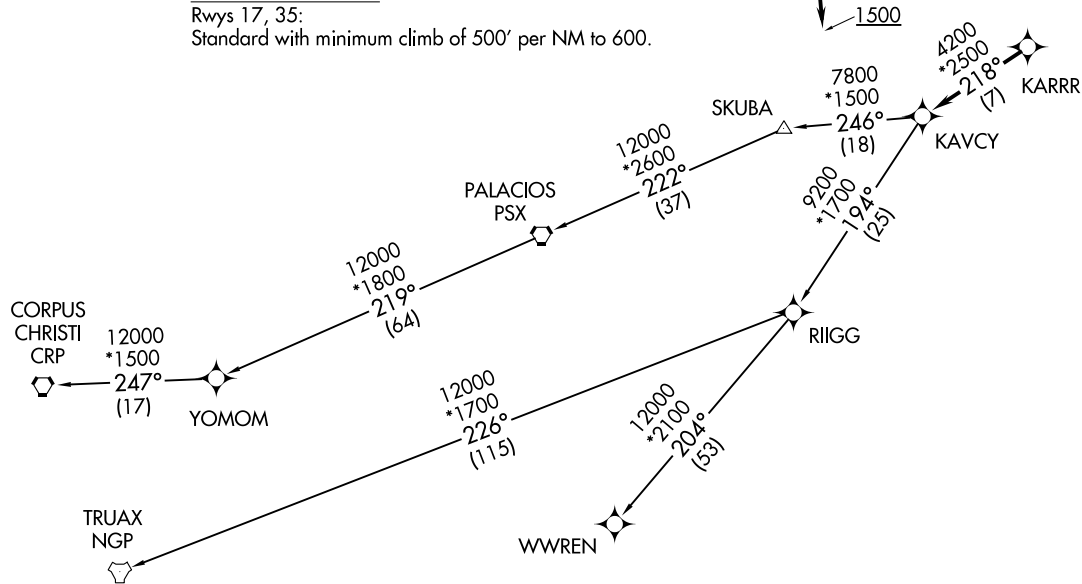
ATIS  
118.125  
CLNC DEL  
121.4  
CLNC DEL (when twr closed)  
119.25  
GND CON  
121.4  
SUGARLAND TOWER★  
118.65 (CTAF)  
HOUSTON DEP CON  
123.8 257.7

RNAV-1 DME/DME/IRU or GPS.  
RADAR required.

TAKEOFF MINIMUMS

Rwys 17, 35:  
Standard with minimum climb of 500' per NM to 600.

**TOP ALTITUDE:  
ASSIGNED BY ATC**



(CONTINUED ON FOLLOWING PAGE)

NOTE: Chart not to scale.

(KARRR7 .KARRR) 25051  
KARRR SEVEN DEPARTURE (RNAV)

AL-5537 (FAA)  
SUGAR LAND RGNL (SGR)  
HOUSTON, TEXAS

# KARRR SEVEN DEPARTURE (RNAV)



## DEPARTURE ROUTE DESCRIPTION

TAKEOFF RUNWAY 17: Climb on heading 170° to 1500, for RADAR vectors to KARRR, thence. . . .

TAKEOFF RUNWAY 35: Climb on heading 350° to 1100, for RADAR vectors to KARRR, thence. . . .

. . . .on track 218° to KAVCY, then on (transition). Maintain ATC assigned altitude. Expect filed altitude 10 minutes after departure.

CORPUS CHRISTI TRANSITION (KARRR7.CRP)

PALACIOS TRANSITION (KARRR7.PSX)

TRUAX TRANSITION (KARRR7.NGP)

WWREN TRANSITION (KARRR7.WWREN)

YOMOM TRANSITION (KARRR7.YOMOM)

SC-5, 20 FEB 2025 to 20 MAR 2025

SC-5, 20 FEB 2025 to 20 MAR 2025