

VOR/DME EWO 113.95 Chan 86 (Y)	APP CRS 037°	Rwy Idg 5003 TDZE 655 Apt Elev 669
--	------------------------	---

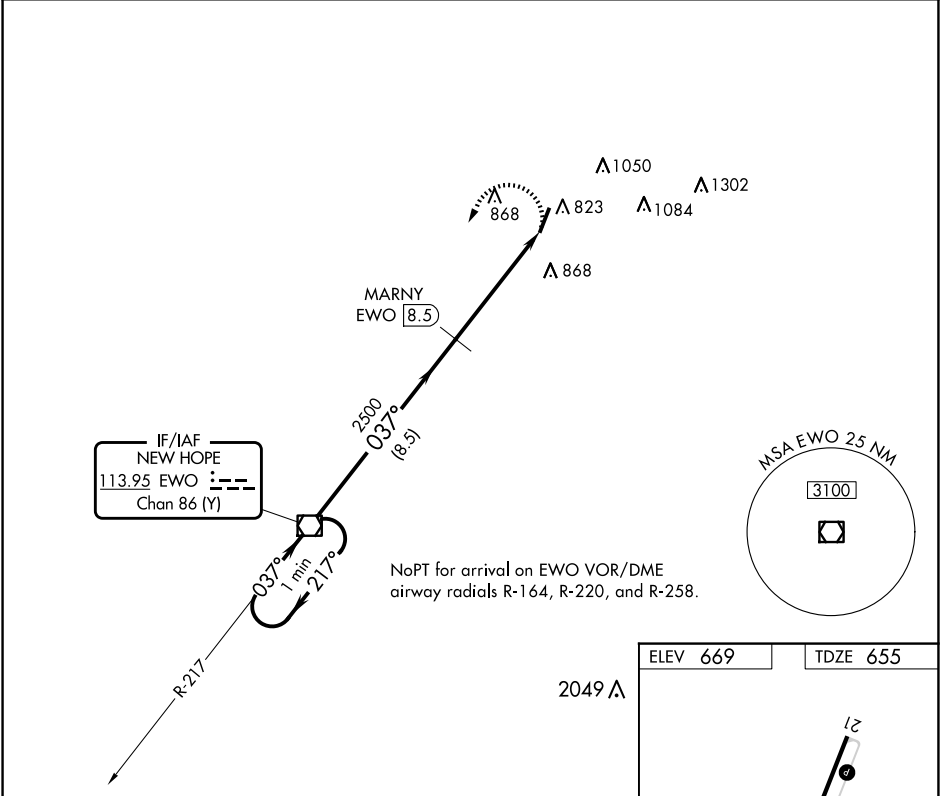
VOR RWY 3

SAMUELS FLD (BRY)

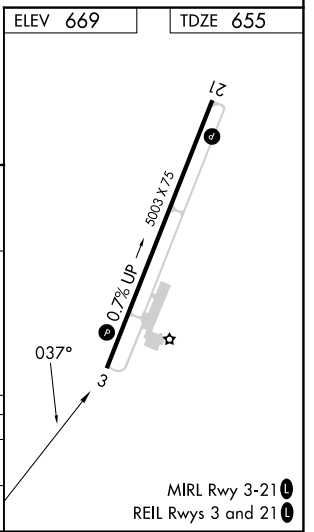
Straight-in and Circling minimums NA at night.
 Rwy 3 helicopter visibility reduction below 1 SM NA.
 DME required.

MISSED APPROACH: Climbing left turn to 2500 direct EWO VOR/DME and hold.

AWOS-3 119.925	LOUISVILLE APP CON 132.075 327.0	UNICOM 122.8 (CTAF) 0
--------------------------	--	---------------------------------



One Minute Holding Pattern	EWO VOR/DME		MARNY EWO 8.5		2500 EWO
	← 217°	→ 037°	→ 037°	→ 2500	↘ 3.50° TCH 41
	8.5 NM		4.9 NM		
CATEGORY	A	B	C	D	
S-3	1200-1	545 (600-1)	1200-1½	545 (600-1½)	
CIRCLING	1200-1 531 (600-1)	1280-1 611 (700-1)	1360-2 691 (700-2)	1480-2¾ 811 (900-2¾)	



SE-1, 20 FEB 2025 to 20 MAR 2025

SE-1, 20 FEB 2025 to 20 MAR 2025