

VORTAC CFB 112.2 Chan 59	APP CRS 170°	Rwy Idg TDZE Apt Elev 833	N/A N/A 833
--	------------------------	---	--

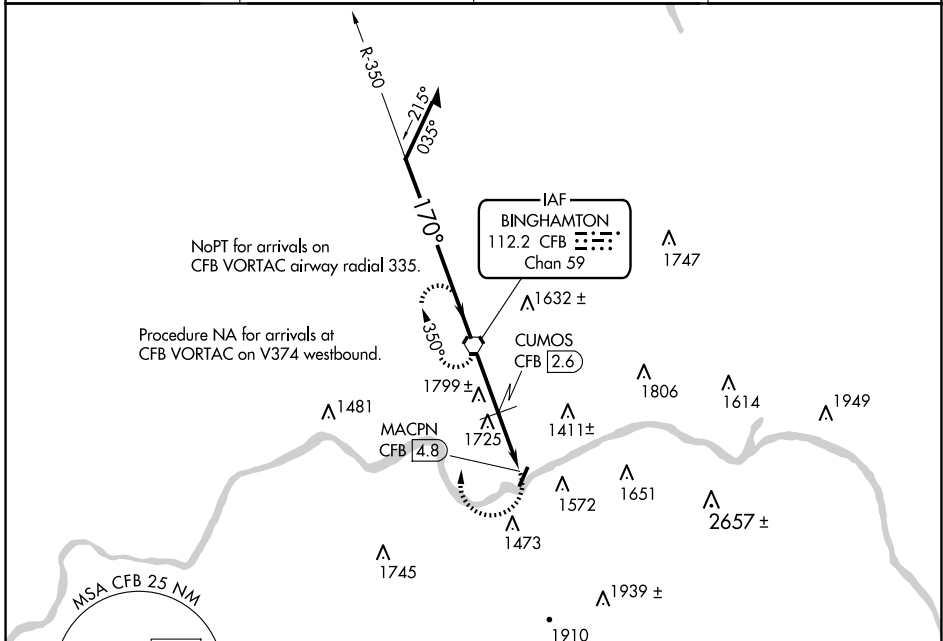
VOR-A
TRI-CITIES (CZG)

⚠ NA
⚠ -17°C

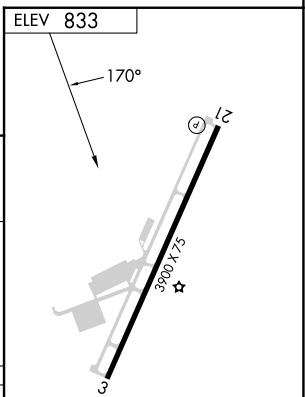
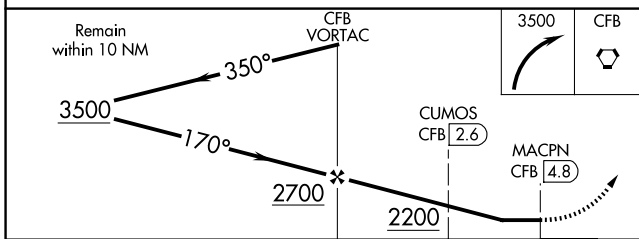
Visibility reduction by helicopters NA. Procedure NA at night.
 When local altimeter setting not received, use Binghamton altimeter and increase all MDA 140 feet.

MISSED APPROACH: Climbing right turn to 3500 direct CFB VORTAC and hold.

AWOS-3 119.075	BINGHAMTON APP CON* 118.6 257.625	CLNC DEL 121.7	UNICOM 122.8 (CTAF) 0
--------------------------	---	--------------------------	--



NoPT for arrivals on CFB VORTAC airway radial 335.
 Procedure NA for arrivals at CFB VORTAC on V374 westbound.



CATEGORY	A	B	C	D
CIRCLING	2200-1¼ 1367 (1400-1¼)	2200-1½ 1367 (1400-1½)	NA	NA
CUMOS FIX MINIMUMS				
CIRCLING	2000-1¼ 1167 (1200-1¼)	2020-1½ 1187 (1200-1½)	NA	NA

REIL Rwys 3 and 21 **0**
 MIRL Rwy 3-21 **0**

FAF to MAP 4.8 NM

Knots	60	90	120	150	180
Min:Sec	4:48	3:12	2:24	1:55	1:36

NE-2, 20 FEB 2025 to 20 MAR 2025

NE-2, 20 FEB 2025 to 20 MAR 2025