

|  |                        |                             |   |
|--|------------------------|-----------------------------|---|
| WAAS<br>CH <b>82134</b><br><b>W26A</b> | APP CRS<br><b>258°</b> | Rwy Idg<br>TDZE<br>Apt Elev | <b>5000</b><br><b>209</b><br><b>239</b> |
|--|------------------------|-----------------------------|---|

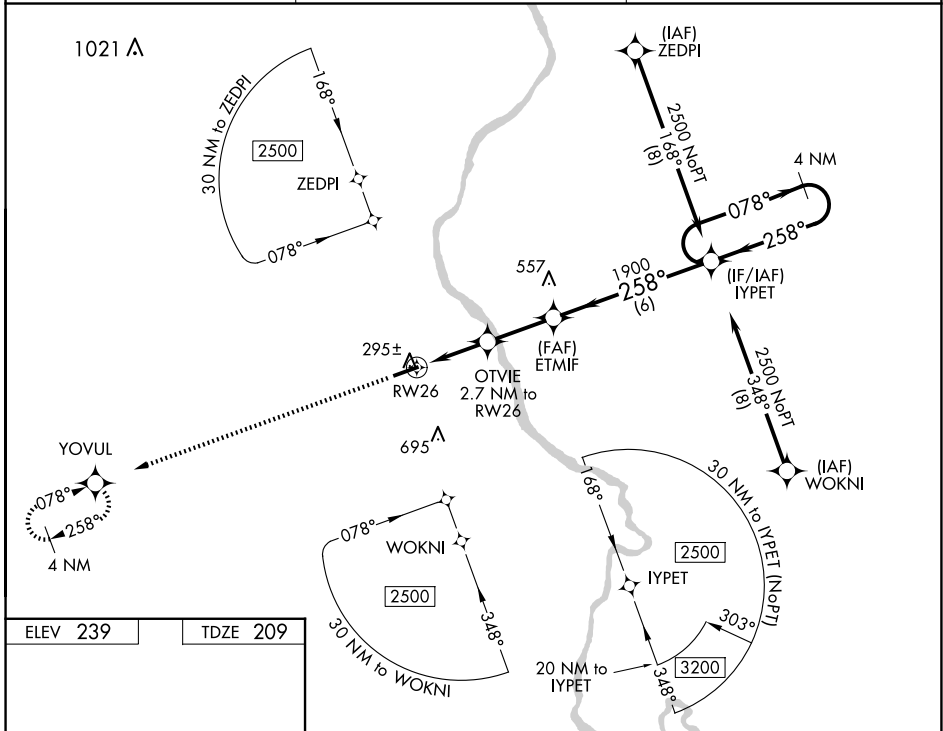
# RNAV (GPS) RWY 26

CHERAW MUNI/LYNCH BELLINGER FLD (CQW)

**▼** **▲** DME/DME RNP-0.3 NA. When local altimeter setting not received, use Darlington altimeter setting and increase all DA 44 feet, all MDA 60 feet, LNAV/VNAV all Cats visibility 1/8 mile, LNAV Cat C/D and Circling Cat C/D visibility 1/4 mile. Helicopter visibility reduction below 1 SM NA. For uncompensated Baro-VNAV systems, LNAV/VNAV NA below -15°C (5°F) or above 54°C (130°F). Procedure NA at night.

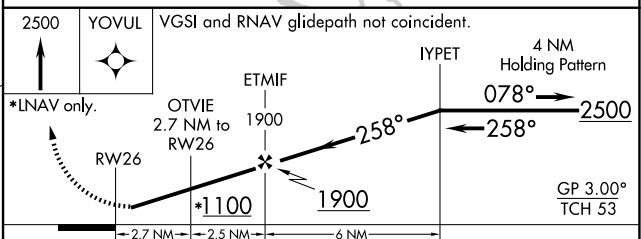
**MISSED APPROACH:** Climb to 2500 direct YOVL and hold.

|                          |  |                                 |
|--------------------------|--|---------------------------------|
| AWOS-3<br><b>124.825</b> | FLORENCE APP CON ★<br><b>118.6 341.7</b> | UNICOM<br><b>122.8 (CTAF) 0</b> |
|--------------------------|--|---------------------------------|



ELEV 239 TDZE 209

REIL Rwy 8 and 26 **0**  
MIRL Rwy 8-26 **0**



| CATEGORY          | A                 | B      | C                       | D                       |
|-------------------|-------------------|--------|-------------------------|-------------------------|
| LPV DA            |                   | 459-1  | 250 (300-1)             |                         |
| LNAV/VNAV DA      |                   | 578-1½ | 369 (400-1½)            |                         |
| LNAV MDA          |                   | 560-1  | 351 (400-1)             |                         |
| <b>C</b> CIRCLING | 700-1 461 (500-1) |        | 1060-2½<br>821 (900-2½) | 1060-2¾<br>821 (900-2¾) |

SE-2, 20 FEB 2025 to 20 MAR 2025

SE-2, 20 FEB 2025 to 20 MAR 2025