

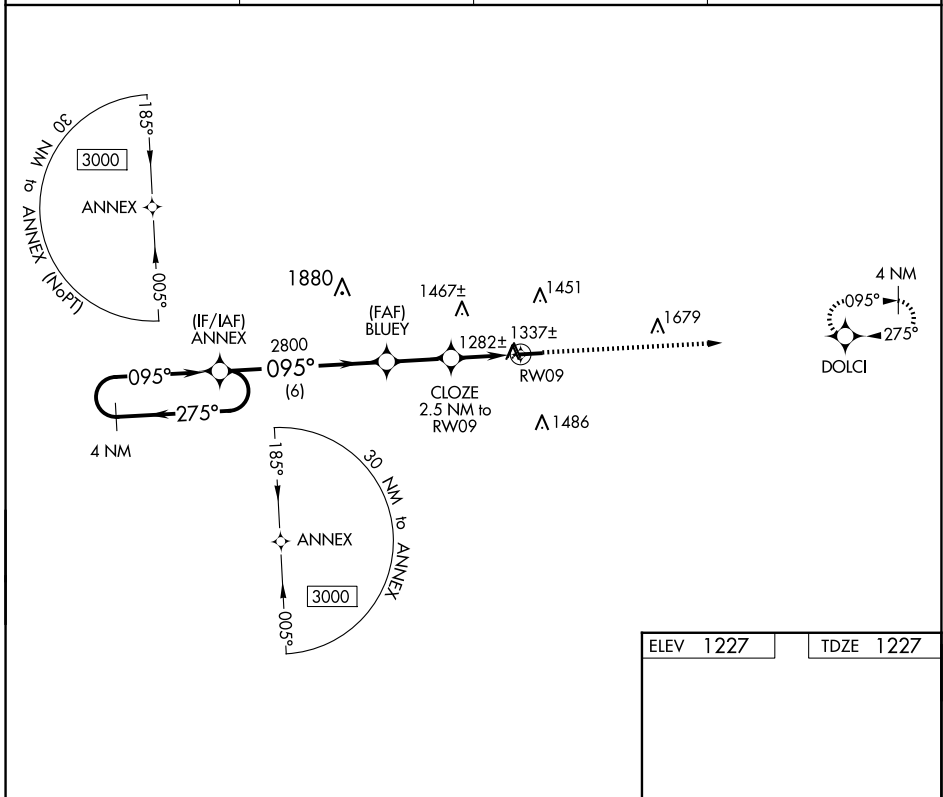
APP CRS	Rwy Idg	<b>4400</b>
<b>095°</b>	TDZE	<b>1227</b>
	Apt Elev	<b>1227</b>

# RNAV (GPS) RWY 9

HOLMES COUNTY (10G)

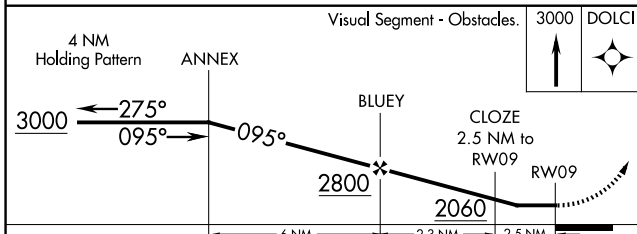
RNP APCH - GPS.	MISSED APPROACH: Climb to 3000 direct DOLCI and hold.
<p><b>▼</b> Rwy 9 helicopter visibility reduction below <math>\frac{3}{4}</math> SM NA. When local altimeter setting not received, use Wayne County altimeter setting: increase all MDA 60 feet and visibility LNAV and Circling Cats C and D <math>\frac{1}{4}</math> SM.</p> <p><b>▲</b></p>	

AWOS-3 <b>128.325</b>	INDIANAPOLIS CENTER <b>124.45 323.275</b>	UNICOM <b>123.0</b> (CTAF)	<b>123.4</b> <b>0</b>
--------------------------	--	-------------------------------	-----------------------



EC-2, 20 FEB 2025 to 20 MAR 2025

EC-2, 20 FEB 2025 to 20 MAR 2025



ELEV 1227	TDZE 1227
-----------	-----------

1251±  
▲

4400 X 75

1.0% UP

27

MIRL Rwy 9-27 **0**  
REIL Rwy 9 and 27 **0**

CATEGORY	A	B	C	D
LNAV MDA	1620-1	393 (400-1)	1620-1 $\frac{1}{8}$	393 (400-1 $\frac{1}{8}$ )
<b>C</b> CIRCLING	1760-1	533 (600-1)	1840-1 $\frac{3}{4}$ 613 (700-1 $\frac{3}{4}$ )	1860-2 633 (700-2)