

WAAS CH <b>99701</b> <b>W24A</b>	APP CRS <b>240°</b>	Rwy Idg TDZE Apt Elev	<b>5500</b> <b>545</b> <b>547</b>
----------------------------------------	------------------------	-----------------------------	-----------------------------------------

# RNAV (GPS) RWY 24

MUSCATINE MUNI (MUT)

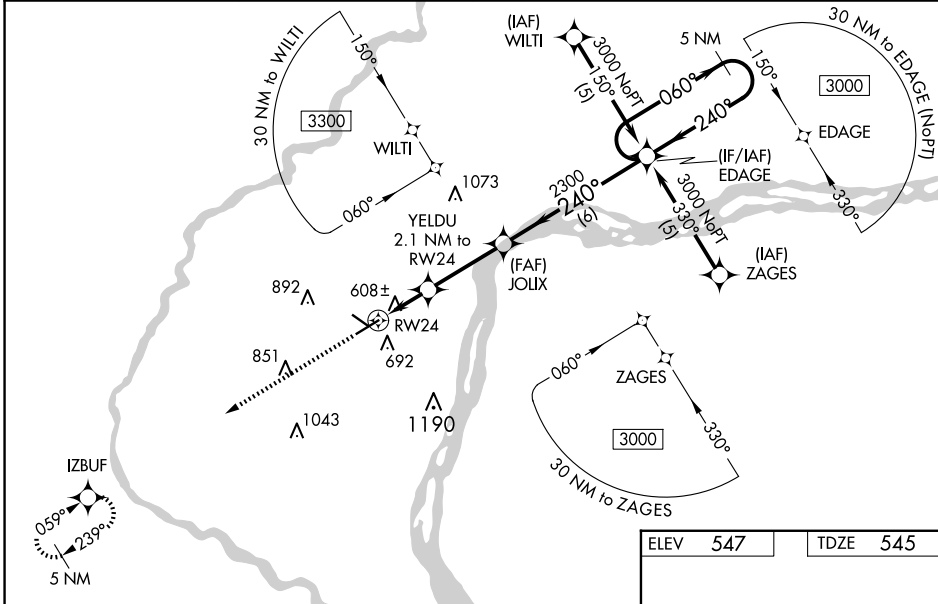
RNP APCH

**▼** For uncompensated Baro-VNAV systems, LNAV/VNAV NA below -16°C (4°F) or above 48°C (118°F). For inop ALS, increase LPV all visibilities to 1 SM, increase LNAV/VNAV all Cats and LNAV Cats C visibility to 1½ SM, and increase LNAV Cat D visibility to 1¼ SM. When local altimeter setting not received, use Iowa City altimeter setting and increase LPV DA to 992 and all visibilities ¼ SM; increase LNAV/VNAV DA to 1030 feet and all visibilities ¼ SM; increase all MDA 80 feet and LNAV Cats C and D visibility ¼ SM and Circling Cat C visibility ¼ SM. For inop ALS when using Iowa City altimeter setting, increase LPV all visibilities to 1 SM, LNAV/VNAV all visibilities to 1¾ SM, LNAV Cats A and B visibility to 1 SM, and LNAV Cats C and D visibility to 1¾ SM. Baro-VNAV and VDP NA when using Iowa City altimeter setting.

**MALSR**

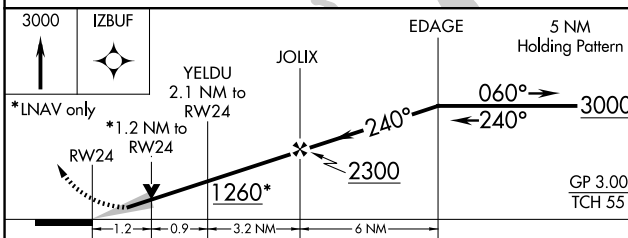
**MISSED APPROACH:**  
Climb to 3000 direct IZBUF and hold.

AWOS-3P <b>120.625</b>	QUAD CITY APP CON * <b>133.275 257.8</b>	CLNC DEL <b>119.125</b>	UNICOM <b>122.7 (CTAF) 0</b>
---------------------------	---------------------------------------------	----------------------------	---------------------------------



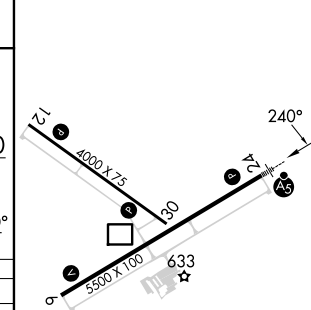
NC-3, 20 FEB 2025 to 20 MAR 2025

NC-3, 20 FEB 2025 to 20 MAR 2025



ELEV <b>547</b>	TDZE <b>545</b>
-----------------	-----------------

CATEGORY	A	B	C	D
LPV DA		812-½	267 (300-½)	
LNAV/VNAV DA		950-¾	405 (500-¾)	
LNAV MDA	960-½	415 (500-½)	960-¾ 415 (500-¾)	960-1 415 (500-1)
<b>C</b> CIRCLING	1080-1¼ 533 (600-1¼)	1200-1¼ 653 (700-1¼)	1200-1¾ 653 (700-1¾)	1500-3 953 (1000-3)



REIL Rws 6, 12, and 30 0  
MIRL Rws 6-24 and 12-30 0