

WAAS CH 42636 W30A	APP CRS 306°	Rwy Idg TDZE Apt Elev	4000 543 547
--	------------------------	-----------------------------	---

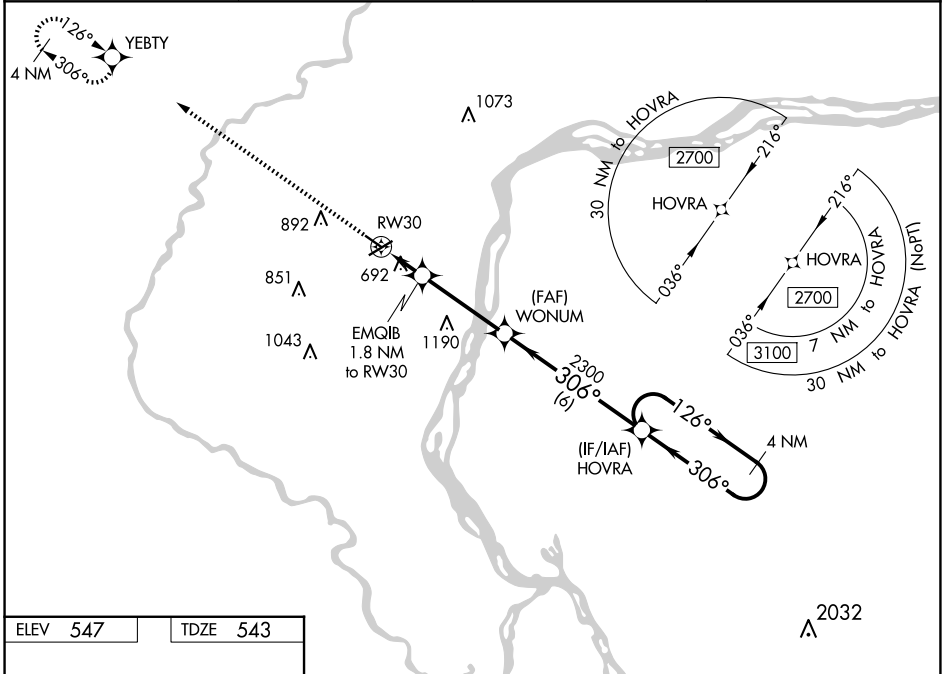
RNAV (GPS) RWY 30

MUSCATINE MUNI (MUT)

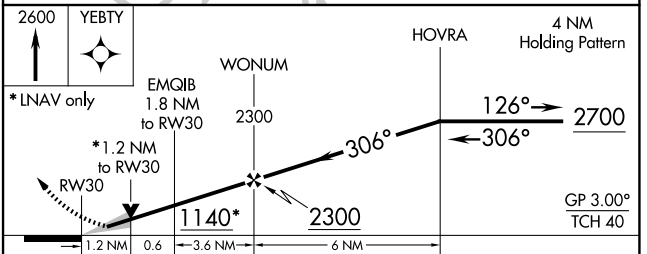
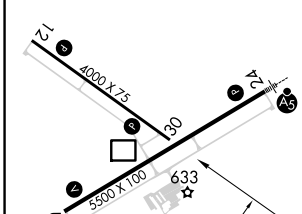
▼ DME/DME RNP-0.3 NA. Helicopter visibility reduction below 1 SM NA. VDP and Baro-VNAV NA with Iowa City altimeter setting. When local altimeter setting not received, use Iowa City altimeter setting and increase all DA 76 feet and all MDA 80 feet, increase LNAV/VNAV all Cats visibility 1/4 mile. For uncompensated Baro-VNAV systems, LNAV/VNAV NA below -16°C (4°F) or above 54°C (130°F).

▲ MISSED APPROACH: Climb to 2600 direct YEBTY and hold.

AWOS-3P 120.625	QUAD CITY APP CON * 133.275 257.8	CLNC DEL 119.125	UNICOM 122.7 (CTAF) 0
---------------------------	---	----------------------------	---------------------------------



ELEV 547	TDZE 543
-----------------	-----------------



CATEGORY	A	B	C	D
LPV DA	743-1	200 (200-1)		NA
LNAV/VNAV DA	989-1½	446 (500-1½)		NA
LNAV MDA	960-1	417 (500-1)		NA
C CIRCLING	1000-1 453 (500-1)	1200-1 653 (700-1)		NA

MUSCATINE, IOWA
Orig-A 26MAY16

41°22'N-91°09'W

RNAV (GPS) RWY 30

NC-3, 20 FEB 2025 to 20 MAR 2025

NC-3, 20 FEB 2025 to 20 MAR 2025