

# HI-ILS Z or LOC Z RWY 14

LOC I-CZH <b>110.5</b>	APCH CRS <b>137°</b>	Rwy Idg 7701 TDZE 27 Arprt Elev 30
---------------------------	-------------------------	---

[USAF]

JACKSONVILLE INTL (KJAX)

DME required. RADAR required for procedure entry.

- ★ When ALS inop, increase vis to ¾ mile.
- ★★ When ALS inop, increase vis to 1 mile.

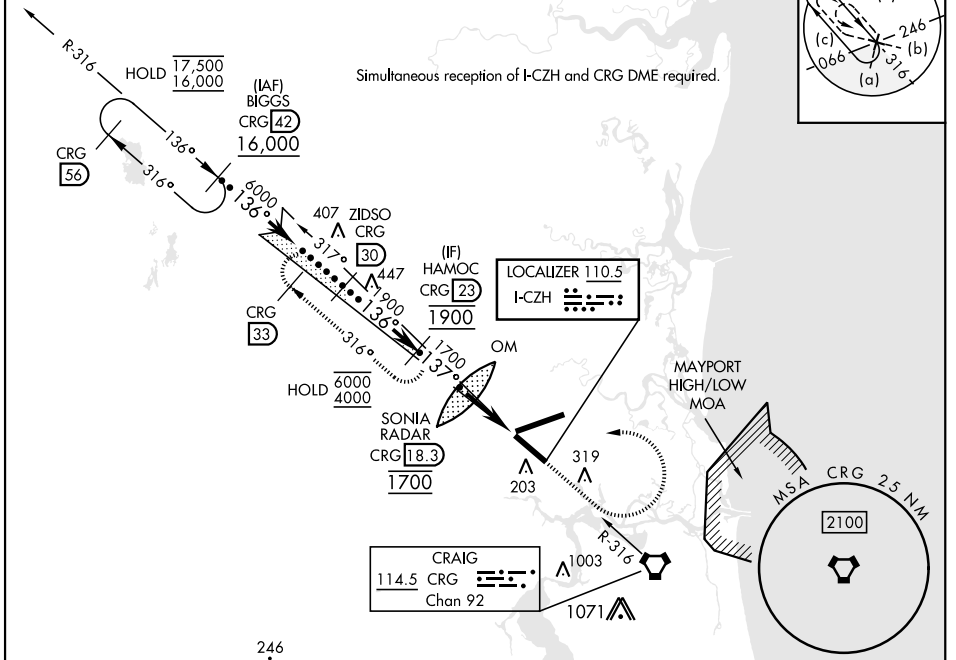
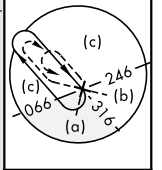


MISSED APPROACH: Climb to 2000 then climbing left turn to 4000 on CRG R-316 to HAMOC 23 DME and hold.

ATIS <b>125.85</b>	APP CON <b>119.0 269.9</b>	TOWER <b>118.3 317.7</b>	GND CON <b>121.9 348.6</b>	CLNC DEL <b>119.5 290.275</b>
-----------------------	-------------------------------	-----------------------------	-------------------------------	----------------------------------

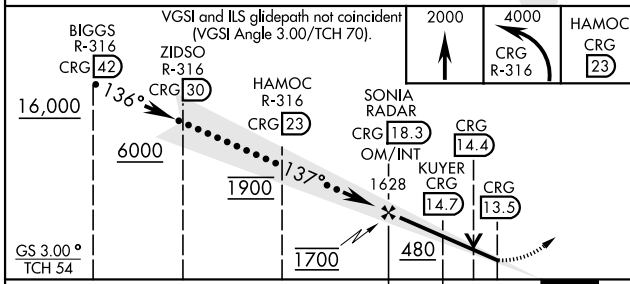
Rwy 14 helicopter visibility reduction below ¾ mile NA. Autopilot coupled approach NA below 750.

Simultaneous reception of I-CZH and CRG DME required.

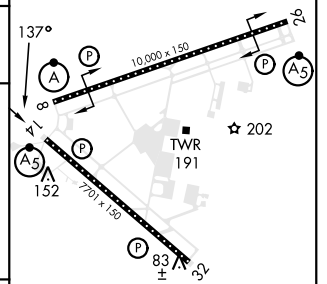


246

EMERG SAFE ALT 100 NM 2800 FROM CRG VORTAC



ELEV 30	TDZE 27
---------	---------



CATEGORY	C	D	E
S-ILS 14 *	227-½	200 (200-½)	
S-LOC 14 **	380-¾	353 (400-¾)	
CIRCLING	580-1½ 550 (600-1½)	640-2 610 (700-2)	760-2½ 730 (800-2½)

FAF to MAP 4.8 NM					
Knots	120	140	160	180	200
Min:Sec	2:24	2:03	1:48	1:36	1:26

# HI-ILS Z or LOC Z RWY 14

SE-3, 20 FEB 2025 to 20 MAR 2025

SE-3, 20 FEB 2025 to 20 MAR 2025