

# HI-ILS Z or LOC Z RWY 26

LOC I-PEK <b>110.3</b>	APCH CRS <b>257°</b>	Rwy Idg <b>10,000</b> TDZE <b>27</b> Arpt Elev <b>30</b>
---------------------------	-------------------------	--

[USAF]

JACKSONVILLE INTL (KJAX)

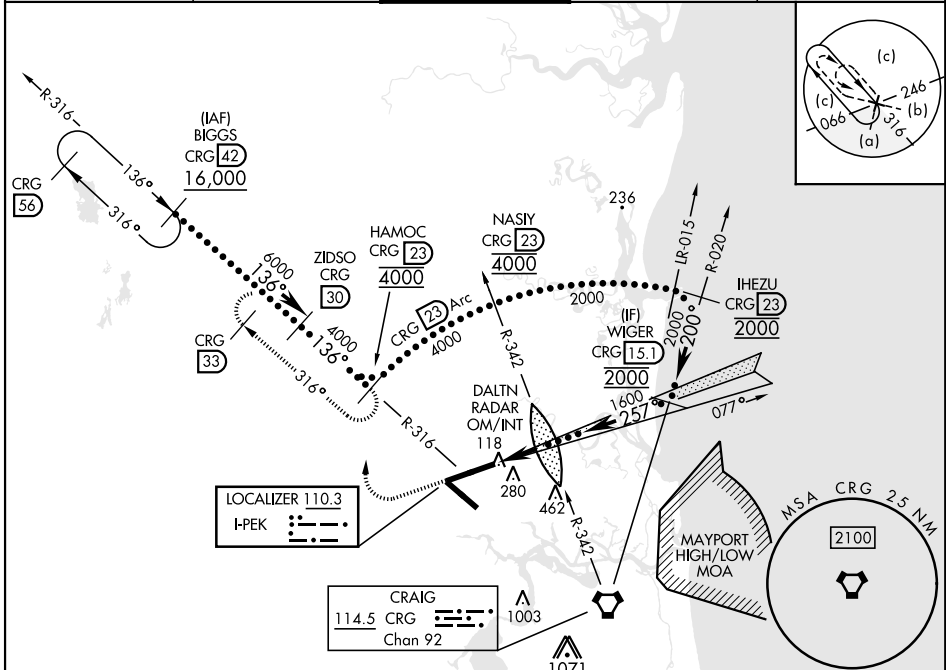
DME required. RADAR required for procedure entry.

- \* When ALS inop, increase CAT E RVR to 40, vis to 3/8 mile.
- \*\* When ALS inop, increase vis to 1 3/8 miles.
- \*\*\* When ALS inop, increase RVR to 55, vis to 1 mile.



MISSED APPROACH: Climb to 1200 then climbing right turn to 4000 on heading 360° and CRG R-316 to HAMOC 23 DME and hold, continue climb-in-hold to 4000.

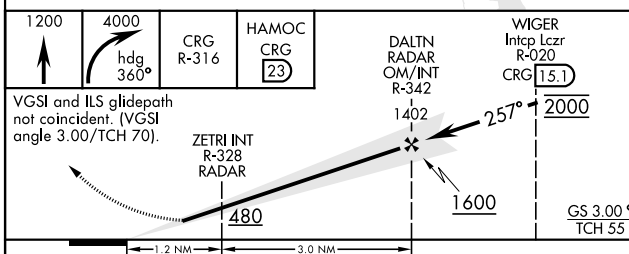
ATIS <b>125.85</b>	APP CON <b>119.0 269.9</b>	TOWER <b>118.3 317.7</b>	GND CON <b>121.9 348.6</b>	CLNC DEL <b>119.5 290.275</b>
-----------------------	-------------------------------	-----------------------------	-------------------------------	----------------------------------



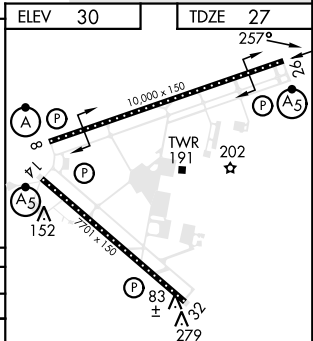
SE-3, 20 FEB 2025 to 20 MAR 2025

SE-3, 20 FEB 2025 to 20 MAR 2025

EMERG SAFE ALT 100 NM 2600



CATEGORY	C	D	E
S-ILS 26*	227/18	200 (200-1/2)	
S-LOC 26**	480/45	453 (500-7/8)	
CIRCLING	580-1 1/2 550 (600-1 1/2)	580-2 550 (600-2)	760-2 1/2 730 (800-2 1/2)
	ZETRI FIX MINIMUMS (DUAL VOR RECEIVERS REQUIRED)		
S-LOC 26***	400/35	373 (400-3/8)	
CIRCLING	580-1 1/2 550 (600-1 1/2)	580-2 550 (600-2)	760-2 1/2 730 (800-2 1/2)



REIL Rwy 32	HIRL Rwy 8-26, 14-32	TDZL/CL Rwy 8-26, 14			
FAF to MAP 4.2 NM					
Knots	120	140	160	180	200
Min:Sec	2:06	1:48	1:35	1:24	1:16

# HI-ILS Z or LOC Z RWY 26