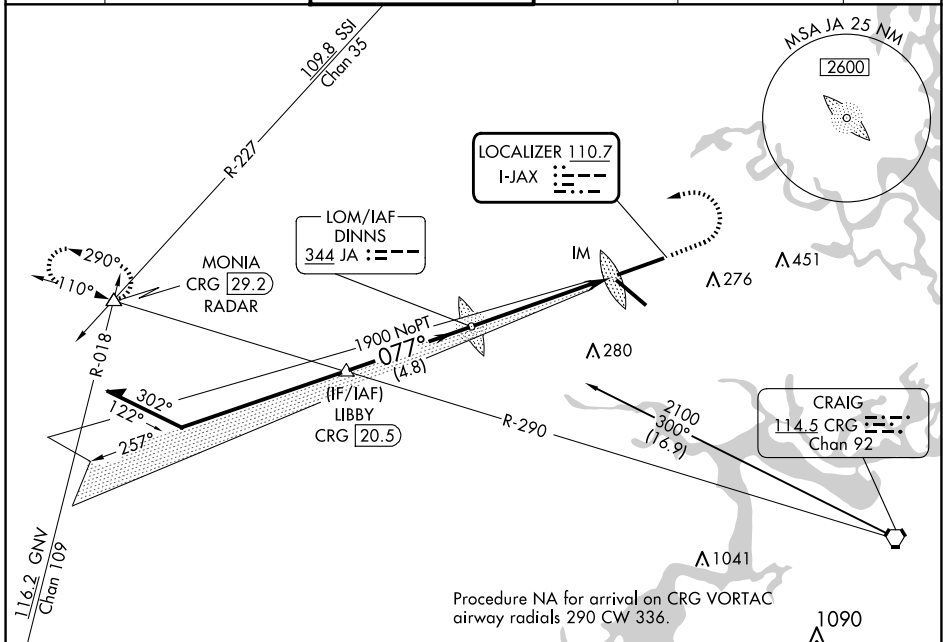


LOC I-JAX <b>110.7</b>	APP CRS <b>077°</b>	Rwy ldg <b>10000</b> TDZE <b>30</b> Apt Elev <b>30</b>
---------------------------	------------------------	--

# ILS Y or LOC Y RWY 8

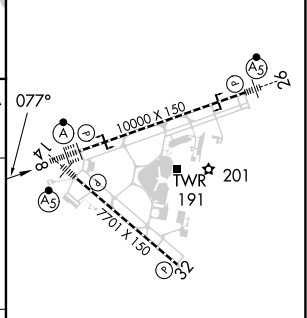
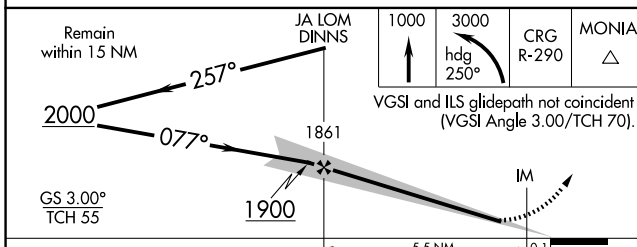
JACKSONVILLE INTL (JAX)

<p>For inop ALS, increase S-ILS 8 Cat E visibility to RVR 4000 and S-LOC 8 Cat E visibility to 1 1/2 SM.</p>	<b>JACKSONVILLE TOWER</b> <b>118.3 317.7</b>		<b>GND CON</b> <b>121.9 348.6</b>	<b>CLNC DEL</b> <b>119.5 290.275</b>	CPDLC
	<b>D-ATIS</b> <b>125.85</b>	<b>JACKSONVILLE APP CON</b> <b>119.0 269.9</b>	<b>MISSED APPROACH:</b> Climb to 1000 then climbing left turn to 3000 on heading 250° and on CRG VORTAC R-290 to MONIA INT/CRG 29.2 DME/RADAR and hold.		



Procedure NA for arrival on CRG VORTAC airway radials 290 CW 336.

ELEV 30	TDZE 30
---------	---------



CATEGORY	A	B	C	D	E
S-ILS 8	230/18 200 (200-1/2)				
S-LOC 8	480/24	450 (500-1/2)	480/45 450 (500-3/4)		
CIRCLING	520-1	490 (500-1)	580-1 1/2 550 (600-1 1/2)	580-2 550 (600-2)	760-2 1/2 730 (800-2 1/2)

REIL Rwy 32	60	90	120	150	180
TDZ/CL Rwy 8, 14, and 26	5:36	3:44	2:48	2:14	1:52
HIRL Rwy 8-26 and 14-32	FAF to MAP 5.6 NM				

SE-3, 20 FEB 2025 to 20 MAR 2025

SE-3, 20 FEB 2025 to 20 MAR 2025