

# SAWGY THREE DEPARTURE

**TOP ALTITUDE:**  
**3000**

RADAR required.

D-ATIS  
125.85  
CLNC DEL  
119.5 290.275  
CPDLC  
GND CON  
121.9 348.6  
JACKSONVILLE TOWER  
118.3 317.7  
JACKSONVILLE DEP CON  
124.9 308.4

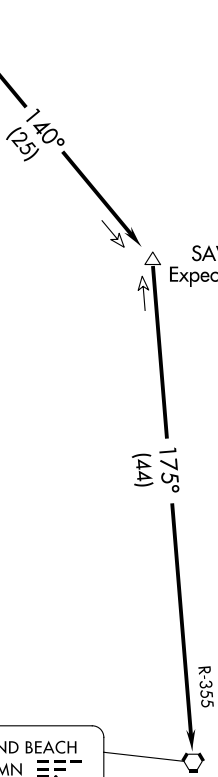
DINNS  
344 JA :---

CRAIG  
114.5 CRG ---  
Chan 92

SAWGY  
Expect 12000

TAKEOFF MINIMUMS  
Rwys 8, 14, 26, 32: Standard.

ORMOND BEACH  
112.6 OMN ---  
Chan 73



SE-3, 20 FEB 2025 to 20 MAR 2025

SE-3, 20 FEB 2025 to 20 MAR 2025

NOTE: Chart not to scale.

## DEPARTURE ROUTE DESCRIPTION

**TAKEOFF ALL RUNWAYS:** Climb on assigned heading for RADAR vectors to join CRG R-140 to SAWGY INT, then on OMN R-355 to OMN VORTAC, thence . . . .

. . . .on RADAR vectors to appropriate route. Maintain 3000, expect filed altitude 10 minutes after departure.

# SAWGY THREE DEPARTURE