

VORTAC CRG 114.5 Chan 92	APP CRS 316°	Rwy Idg TDZE Apt Elev	7701 24 30
--	------------------------	-----------------------------	---------------------------------------

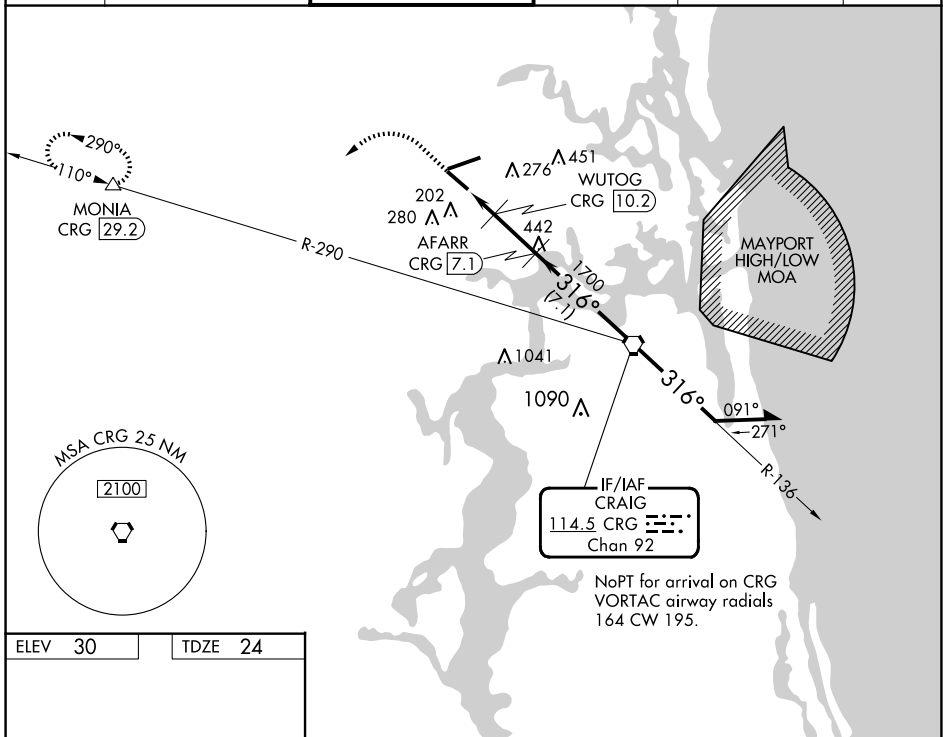
VOR/DME RWY 32

JACKSONVILLE INTL (JAX)

▼ Rwy 32 helicopter visibility reduction by below ¾ SM NA.
▲ Cat E procedure turn NA.

MISSED APPROACH: Climb to 1000 then climbing left turn to 3000 on heading 250° and on CRG VORTAC R-290 to MONIA/CRG 29.2 DME and hold.

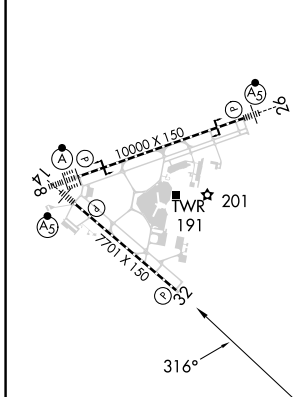
D-ATIS 125.85	JACKSONVILLE APP CON 119.0 269.9	JACKSONVILLE TOWER 118.3 317.7	GND CON 121.9 348.6	CLNC DEL 119.5 290.275	CPDLC
-------------------------	--	--	-------------------------------	----------------------------------	-------



SE-3, 20 FEB 2025 to 20 MAR 2025

SE-3, 20 FEB 2025 to 20 MAR 2025

ELEV 30	TDZE 24
---------	---------



REIL Rwy 32
 TDZ/CL Rws 8, 14, and 26
 HIRL Rws 8-26 and 14-32

1000	3000	CRG R-290	MONIA	VGSI and ILS glidepath not coincident (VGSI Angle 3.05/TCH 68).	
↑	hdg 250°	▲	△		
		AFARR CRG 7.1	WUTOG CRG 10.2	CRG VORTAC 6000	
		CRG 12.2	CRG 11.1	Remain within 10 NM	
		720	1700	136°	
		316°	2100		
		1.1 0.9 → 3.1 NM	→ 7.1 NM		
CATEGORY	A	B	C	D	E
S-32	460-1	436 (500-1)	460-1¼	436 (500-1¼)	
CIRCLING	520-1	490 (500-1)	580-1½ 550 (600-1½)	580-2 550 (600-2)	760-2½ 730 (800-2½)