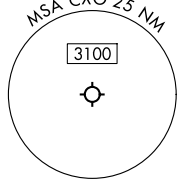
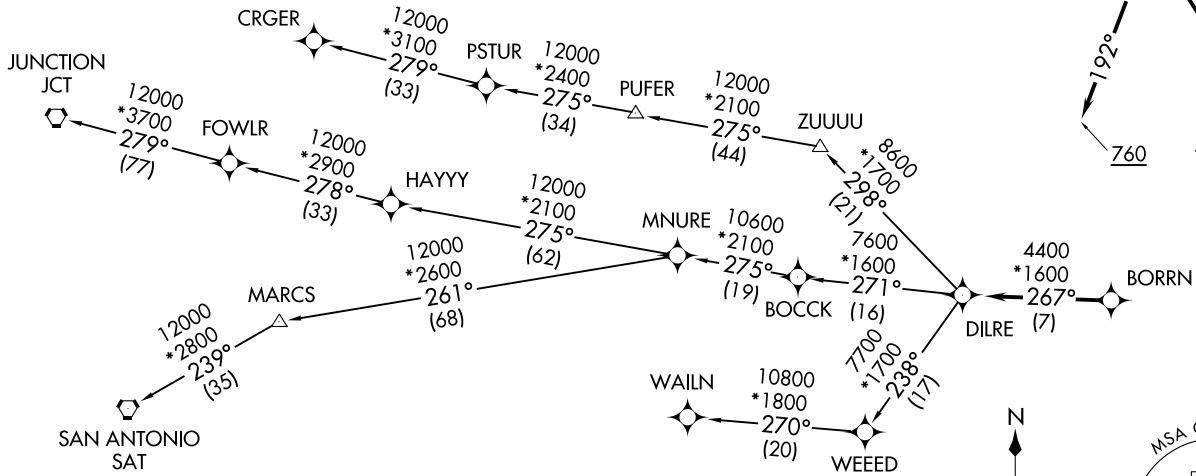
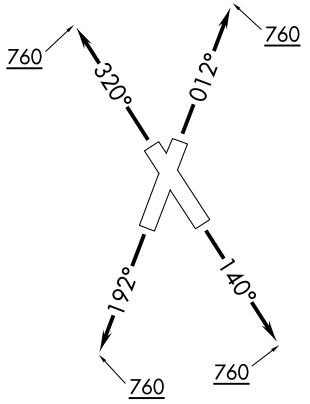


**TOP ALTITUDE:
ASSIGNED BY ATC**

RNAV 1 - DME/DME/IRU or GPS.
RADAR required.

ATIS
118.325
CLNC DEL
120.45
CLNC DEL (When twr closed)
119.55
GND CON
120.45
CONROE TOWER *
124.125 (CTAF)
HOUSTON DEP CON
119.7 281.4

TAKEOFF MINIMUMS
Rwys 1, 14, 19, 32: Standard with
minimum climb of 500'/NM to 760.



NOTE: CRGER-TRANSITION ATC assigned only
for aircraft departing 54T, AXH, EFD, GLS,
HPY, IWS, LBX, LVJ, SGR, TME, T00, T41.

(CONTINUED ON FOLLOWING PAGE)

NOTE: Chart not to scale.

BORRNN SIX DEPARTURE (RNAV)
(BORRNN, BORRNN) 30NOV23

CONROE/NORTH HOUSTON RGNL (CXO)
HOUSTON, TEXAS

(BORRNN, BORRNN) 25051
BORRNN SIX DEPARTURE (RNAV)

AL-5573 (FAA) CONROE/NORTH HOUSTON RGNL (CXO)
HOUSTON, TEXAS

BORRN SIX DEPARTURE (RNAV)



DEPARTURE ROUTE DESCRIPTION

TAKEOFF RUNWAY 1: Climb on heading 012° to 760, for RADAR vectors to BORRN, thence. . . .

TAKEOFF RUNWAY 14: Climb on heading 140° to 760, for RADAR vectors to BORRN, thence. . . .

TAKEOFF RUNWAY 19: Climb on heading 192° to 760, for RADAR vectors to BORRN, thence. . . .

TAKEOFF RUNWAY 32: Climb on heading 320° to 760, for RADAR vectors to BORRN, thence. . . .

. . . .on track 267° to DILRE, then on (transition). Maintain ATC assigned altitude. Expect filed altitude 10 minutes after departure.

CRGER TRANSITION (BORRN6.CRGER)

JUNCTION TRANSITION (BORRN6.JCT)

MNURE TRANSITION (BORRN6.MNURE)

SAN ANTONIO TRANSITION (BORRN6.SAT)

WAILN TRANSITION (BORRN6.WAILN)

SC-5, 20 FEB 2025 to 20 MAR 2025

SC-5, 20 FEB 2025 to 20 MAR 2025