


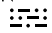
# EL DORADO ONE DEPARTURE

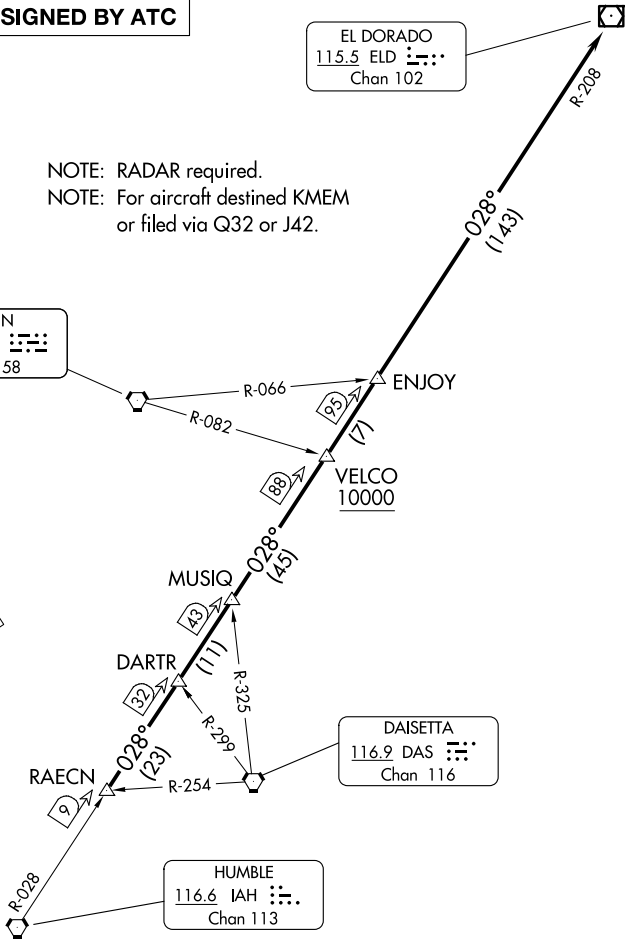
ATIS  
 118.325  
 CLNC DEL  
 120.45  
 CLNC DEL  
 119.55 (when twr closed)  
 GND CON  
 120.45  
 CONROE TOWER ★  
 124.125 (CTAF)  
 HOUSTON DEP CON  
 119.7 281.4


**TOP ALTITUDE:  
ASSIGNED BY ATC**


EL DORADO  
 115.5 ELD   
 Chan 102

NOTE: RADAR required.  
 NOTE: For aircraft destined KMEM  
 or filed via Q32 or J42.

LUFKIN  
 112.1 LFK   
 Chan 58



DAISSETA  
 116.9 DAS   
 Chan 116

HUMBLE  
 116.6 IAH   
 Chan 113

**TAKEOFF MINIMUMS**  
 Rwys 1, 14, 19, 32: Standard.

NOTE: Chart not to scale.

## DEPARTURE ROUTE DESCRIPTION

**TAKEOFF ALL RUNWAYS:** When entering controlled airspace, climb on assigned heading for RADAR vectors to RAECN INT. Maintain ATC assigned altitude. Expect filed altitude 10 minutes after departure, thence. . . .

. . . .on IAH R-028 and the ELD R-208 to ELD VOR/DME, cross VELCO INT at or above 10000.