

RNAV-1 DME/DME/IRU or GPS.

RADAR required.

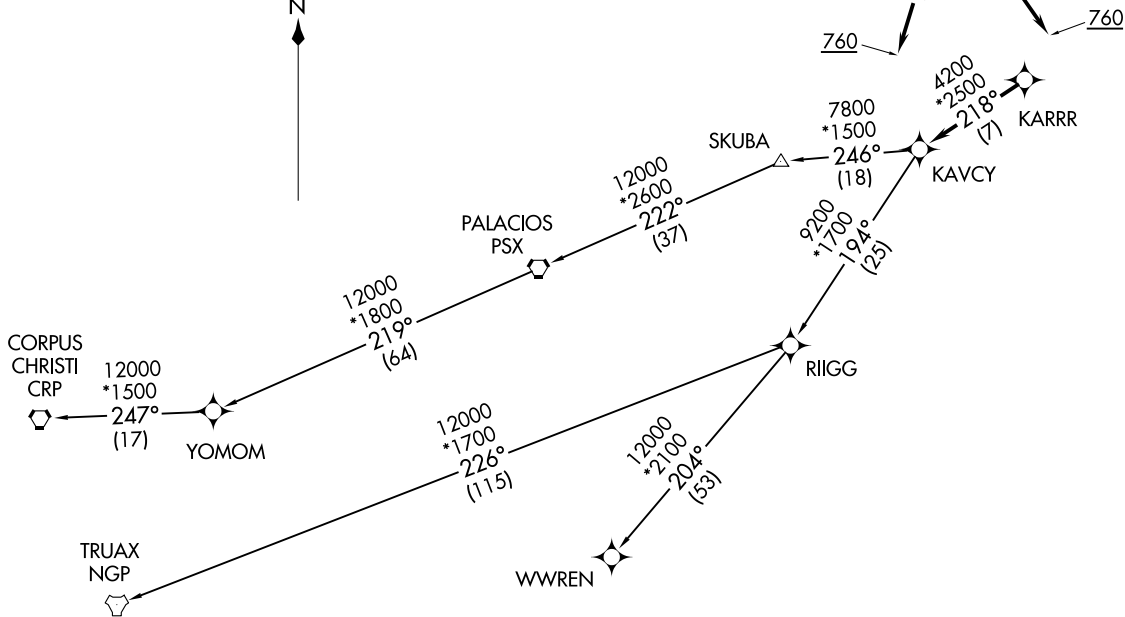
TAKEOFF MINIMUMS

Rwys 1, 14, 19, 32:

Standard with minimum climb of 500' per NM to 760.

**TOP ALTITUDE:  
ASSIGNED BY ATC**

ATIS  
118.325  
CLNC DEL  
120.45  
CLNC DEL (when twr closed)  
119.55  
GND CON  
120.45  
CONROE TOWER \*  
124.125 (CTAF)  
HOUSTON DEP CON  
119.7 281.4



(NARRATIVE ON FOLLOWING PAGE)

NOTE: Chart not to scale.

KARRR SEVEN DEPARTURE (RNAV)  
(KARRR7 .KARRR) 29DEC22

CONROE/NORTH HOUSTON RGNL (CXO)  
HOUSTON, TEXAS

(KARRR7 .KARRR) 23222  
KARRR SEVEN DEPARTURE (RNAV)

AL-5573 (FAA)  
CONROE/NORTH HOUSTON RGNL (CXO)  
HOUSTON, TEXAS

# KARRR SEVEN DEPARTURE (RNAV)



## DEPARTURE ROUTE DESCRIPTION

TAKEOFF RUNWAY 1: Climb on heading 012° to 760, for RADAR vectors to KARRR, thence. . . .

TAKEOFF RUNWAY 14: Climb on heading 140° to 760, for RADAR vectors to KARRR, thence. . . .

TAKEOFF RUNWAY 19: Climb on heading 192° to 760, for RADAR vectors to KARRR, thence. . . .

TAKEOFF RUNWAY 32: Climb on heading 320° to 760, for RADAR vectors to KARRR, thence. . . .

. . . .on track 218° to KAVCY, then on (transition). Maintain ATC assigned altitude. Expect filed altitude 10 minutes after departure.

CORPUS CHRISTI TRANSITION (KARRR7.CRP)

PALACIOS TRANSITION (KARRR7.PSX)

TRUAX TRANSITION (KARRR7.NGP)

WWREN TRANSITION (KARRR7.WWREN)

YOMOM TRANSITION (KARRR7.YOMOM)

SC-5, 20 FEB 2025 to 20 MAR 2025

SC-5, 20 FEB 2025 to 20 MAR 2025